

DA-5262

Contract Amendment Number 2

**Exhibit A**

T5.5 -NELA DAS -CCR-0144R1-AUSCOM – T5.5 Cost

TBIT NELA DAS Design- CCR-0075R1-AUSCOM – TBIT Design Cost

TBIT NELA DAS\_CCR-0117R1-AUSCOM – TBIT Construction Cost



# Austin Commercial, LP

100% Employee Owned

## TRANSMITTAL

No. 7462

PROJECT: LAX TERMINAL CORES & APM INTERFACE (DA-5262)

DATE: 03/09/2021

OWNER PROJ #: DA-5262

DUE DATE:

JOB: 1801

TO: LOS ANGELES WORLD AIRPORTS  
7301 WORLD WAY WEST  
LOS ANGELES CA 90045

FROM: Austin Commercial, LP  
6101 WEST IMPERIAL HIGHWAY SUITE  
200  
LOS ANGELES CA 90045

RE: Revised CCR 0144 - CD 0033 T5.5 NELA DAS

ATTN: Chuck Henning

WE ARE SENDING:	SUBMITTED FOR:	ACTION TAKEN:
<input type="checkbox"/> Submittal	<input checked="" type="checkbox"/> Approval	<input type="checkbox"/> Approved as Submitted
<input type="checkbox"/> Shop Drawings	<input type="checkbox"/> Your Use	<input type="checkbox"/> Approved as Noted
<input type="checkbox"/> Letter	<input type="checkbox"/> As Requested	<input type="checkbox"/> Returned After Loan
<input type="checkbox"/> Prints	<input type="checkbox"/> Review and Comment	<input type="checkbox"/> Resubmit
<input type="checkbox"/> Change Order		<input type="checkbox"/> Submit
<input type="checkbox"/> Plans	<b>SENT VIA:</b>	<input type="checkbox"/> Returned
<input type="checkbox"/> Samples	<input checked="" type="checkbox"/> Attached	<input type="checkbox"/> Returned for Corrections
<input type="checkbox"/> Specifications	<input type="checkbox"/> Separate Cover Via:	<input type="checkbox"/> Other:
<input checked="" type="checkbox"/> Other: CCR Proposal		

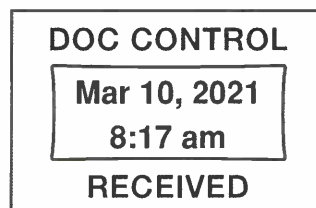
Item	Qty	Date	Reference	Rev.	Description	Comments	Status
CCR Proposal	1	03/09/2021			Revised CCR 0144 - CD 0033 T5.5 NELA DAS		In Review

NOTES: Please see attached Revised CCR 0144 - CD 0033 T5.5 NELA DAS for your review . 31 pages including transmittal.

Signed: Mayra Plagar Date: 03/09/2021  
Mayra Plagar 4:37:13 PM

Received By: \_\_\_\_\_ Date: \_\_\_\_\_

CC: JAMES COLE  
Janet Maza  
Ishwar Gurung





March 9, 2021

Los Angeles World Airports  
6101 W. Imperial Hwy., Suite 200  
Los Angeles, CA 90045  
Via email: chenning@lawa.org

Attn: Mr. Charles Henning

Austin Commercial, L.P.  
Construction Manager/General Contractor

5901 W. Century Blvd, Suite 600  
Los Angeles CA 90045  
310.421.0269 Office  
310.421.0260 Fax  
www.austincommercial.com  
CA Lic. #806038

**RE: Terminal Cores and APM Interface DA-5262  
CCR 144 T5.5 NELA DAS - Change Directive 0033 (Revised)**

Dear Charles:

Attached please find our pricing proposal for CPCN 0144 - T5.5 NELA DAS - Change Directive 0033. Change Directive 0033 is requesting conduit and sleeves for cable and (2) metal panel cut outs for antennas for NELA DAS per the drawings attached in CD-0033.

Austin Commercial and trade partners have carefully reviewed the scope of work on Change Directive 0033 and prepared the requested add. The attached proposal has been reviewed by ACLP for conformance to the allowable costs. This cost is only for T5.5 NELA DAS.

Contractor Change Request 0144 breakdown is as follows:

CCR 0144	Description	Requested Amount
1	CCR 0144 - T5.5 NELA DAS - Change Directive 0033	\$ 16,244.06
2	Gross Receipts Tax on Total COW (@0.101%) (GRT 1)	\$ 16.40
3	Design-Builder Fee, Bonds & Insurance (@7.30%) on COW+GRT (Fee)	\$ 1,187.01
4	Gross Receipts Tax on Fee (@0.101%) (GRT 2)	\$ 1.20
	<b>TOTAL</b>	<b>\$ 17,448.67</b>

The business terms for the change order issued will be Lump Sum pricing per GC-61 sub part A of the prime contract. Attached please find the detailed cost worksheets for this CCR. Work not specifically included is expressly excluded.

Please contact me if you have any questions.

Sincerely,  
**Austin Commercial, LP**

*Barry Staehs*

Barry Staehs  
Pre-Construction Manager

cc: Ishwar Gurung, LAWA PDG  
Jimmy Cole, Austin Commercial, LP  
Janet Maza, Austin Commercial, LP



TERMINAL CORES AND APM INTERFACE  
CPCN 0144 - CD 0033 T5.5 NELA DAS (REVISED)

ITEM	DESCRIPTION	Qty	u/m	ITEMIZED COSTS								TOTALS
				LABOR		MATERIAL		EQUIPMENT		SUBCONTRACT		
				Unit	Extension	Unit	Extension	Unit	Extension	Unit	Extension	
1	CSI PCO 128 - NELA DAS	1.00	LS		\$ -		\$ -		\$ -	\$ 15,498.00	\$ 15,498.00	\$ 15,498.00
2	PCI PCO 015 - NELA DAS	1.00	LS		\$ -		\$ -		\$ -	\$ 506.00	\$ 506.00	\$ 506.00
3	Item 3				\$ -		\$ -		\$ -	\$ -	\$ -	\$ -
4	Item 4				\$ -		\$ -		\$ -	\$ -	\$ -	\$ -
5	Item 5				\$ -		\$ -		\$ -	\$ -	\$ -	\$ -
6	Item 6				\$ -		\$ -		\$ -	\$ -	\$ -	\$ -
7	Item 7				\$ -		\$ -		\$ -	\$ -	\$ -	\$ -
8					\$ -		\$ -		\$ -	\$ -	\$ -	\$ -
	Insert above.				\$ -		\$ -		\$ -	\$ -	\$ -	\$ -
SURE/ Subguard/ Sub Default Program Cost (1.5% on COW)												\$ 240.06
Subtotal					\$ -		\$ -		\$ -	\$ 16,004.00	\$ 16,244.06	\$ 16,244.06
SECTION 2	1	Item			\$ -	\$ -	\$ -		\$ -	\$ -	\$ -	\$ -
	2	Item 2			\$ -		\$ -		\$ -	\$ -	\$ -	\$ -
	3	Item 3			\$ -		\$ -		\$ -	\$ -	\$ -	\$ -
	4	Item 4			\$ -		\$ -		\$ -	\$ -	\$ -	\$ -
	5	Item 5			\$ -		\$ -		\$ -	\$ -	\$ -	\$ -
	6	Item 6			\$ -		\$ -		\$ -	\$ -	\$ -	\$ -
	7	Item 7			\$ -		\$ -		\$ -	\$ -	\$ -	\$ -
	8				\$ -		\$ -		\$ -	\$ -	\$ -	\$ -
	9				\$ -		\$ -		\$ -	\$ -	\$ -	\$ -
	10				\$ -		\$ -		\$ -	\$ -	\$ -	\$ -
	11				\$ -		\$ -		\$ -	\$ -	\$ -	\$ -
	12				\$ -		\$ -		\$ -	\$ -	\$ -	\$ -
	13				\$ -		\$ -		\$ -	\$ -	\$ -	\$ -
	Insert above.				\$ -		\$ -		\$ -	\$ -	\$ -	\$ -
Subtotal					\$ -		\$ -		\$ -	\$ -	\$ -	\$ -
Total Cost of Work (COW)					\$ -		\$ -		\$ -	\$ 16,004.00	\$ 16,244.06	\$ 16,244.06
SECTION 3	Consumables	0.00%	pcnt									\$ -
	Sales Taxes	0.00%	pcnt									\$ -
	Design Builder Fee, Self-Perform	0.00%	pcnt									\$ -
Subtotal												\$ 16,244.06
SECTION 4	COW (includes SURE/ Subguard cost)											\$ 16,244.06
	TAX on COW @0.101%			0.101%	pcnt							\$ 16.40
	Fee, Bonds & Insurance on (COW+TAX on COW) @7.30%			7.300%	pcnt							\$ 1,187.01
	Tax on Fee on (COW+TAX on COW)@0.101%			0.101%	pcnt							\$ 1.20
<b>TOTAL</b>												<b>\$ 17,448.67</b>
TOTAL FEE												\$ 1,187.01
TOTAL TAX												\$ 17.60



INSERT PCO NUMBER & NAME

GMP Approved FEE & TAX CALCS

TBIT		T5.5		T7	
Cost-of-Work (Subcontractors in SURE)	\$ -	Cost-of-Work (Subcontractors in SURE)	\$ 16,004.00	Cost-of-Work (Subcontractors in SURE)	\$ -
SURE (Subguard/Sub Default Program Cost 1.5% on COW)	\$ -	SURE (Subguard/Sub Default Program Cost 1.5% on COW)	\$ 240.06	SURE (Subguard/Sub Default Program Cost 1.5% on COW)	\$ -
Cost-of-Work (Subcontractors not in SURE)	\$ -	Cost-of-Work (Subcontractors not in SURE)	\$ -	Cost-of-Work (Subcontractors not in SURE)	\$ -
<b>SUBTOTAL COW</b>	<b>\$ -</b>	<b>SUBTOTAL COW</b>	<b>\$ 16,244.06</b>	<b>SUBTOTAL COW</b>	<b>\$ -</b>
Tax on COW @0.101%	\$ -	Tax on COW @0.101%	\$ 16.40	Tax on COW @0.101%	\$ -
Fee, Bonds & Ex. Liab Ins. on (COW+TAX on COW) @7.30%	\$ -	Fee, Bonds & Ex. Liab Ins. on (COW+TAX on COW) @7.30%	\$ 1,187.01	Fee, Bonds & Ex. Liab Ins. on (COW+TAX on COW) @7.30%	\$ -
Tax on Fee, Bonds & Ex. Liab Ins. on (COW+TAX on COW)@0.101%	\$ -	Tax on Fee, Bonds & Ex. Liab Ins. on (COW+TAX on COW)@0.101%	\$ 1.20	Tax on Fee, Bonds & Ex. Liab Ins. on (COW+TAX on COW)@0.101%	\$ -
<b>TOTAL</b>	<b>\$ -</b>	<b>TOTAL</b>	<b>\$ 17,448.67</b>	<b>TOTAL</b>	<b>\$ -</b>
<b>TAX</b>	<b>\$ -</b>	<b>TAX</b>	<b>\$ 17.60</b>	<b>TAX</b>	<b>\$ -</b>

Breakout of 7.30% Mark-ups (Fee, Bonds & Insurances)

Contract Fee @4.95%	\$ -	Contract Fee @4.95%	\$ 804.89	Contract Fee @4.95%	\$ -
ACL P&P Bond Cost @1%	\$ -	ACL P&P Bond Cost @1%	\$ 162.60	ACL P&P Bond Cost @1%	\$ -
ACL Ex. Liab Ins & Builders Risk Cost @1.35%	\$ -	ACL Ex. Liab Ins & Builders Risk Cost @1.35%	\$ 219.52	ACL Ex. Liab Ins & Builders Risk Cost @1.35%	\$ -
<b>Total Fee Check</b>	<b>\$ -</b>	<b>Total Fee Check</b>	<b>\$ 1,187.01</b>	<b>Total Fee Check</b>	<b>\$ -</b>

TBIT Breakout	
Cost of Work	\$ -
SURE	\$ -
Fee	\$ -
Bond	\$ -
Insurance	\$ -
Tax	\$ -
<b>\$</b>	<b>\$ -</b>

T5.5 Breakout	
Cost of Work	\$ 16,004.00
SURE	\$ 240.06
Fee	\$ 804.89
Bond	\$ 162.60
Insurance	\$ 219.52
Tax	\$ 17.60
<b>\$</b>	<b>\$ 17,448.67</b>

T7 Breakout	
Cost of Work	\$ -
SURE	\$ -
Fee	\$ -
Bond	\$ -
Insurance	\$ -
Tax	\$ -
<b>\$</b>	<b>\$ -</b>

TOTAL	
Cost of Work	\$ 16,004.00
SURE	\$ 240.06
Fee	\$ 804.89
Bond	\$ 162.60
Insurance	\$ 219.52
Tax	\$ 17.60
<b>\$</b>	<b>\$ 17,448.67</b>



Terminal Cores and APM Interface (DA-5262)

Project # DA-5262

Los Angeles World Airports

**Date:** 2/2/2021 **Document Control Number:** 3246

Transmitted To	Transmitted By
Maza, Janet Austin Commercial LP 6101 W. Imperial Highway Suite 200 Los Angeles, CA 90045 Tel: Fax:	Henning, Charles Planning & Development Group 6101 W. Imperial Highway Suite 200 Los Angeles, CA 90045 Tel: Fax:

Package Transmitted For	Delivered Via	Tracking Number
CD-0033-PDG - T5.5 NELA DAS - 2021-02-02	Email	CD-0033-PDG

Item #	Qty	Item	Reference	Description	Notes	Status
0001	1.00		3246	CD-0033-PDG - T5.5 NELA DAS - 2021-02-02		

Cc:	Name	Company	Phone	Email	Copies
	Alcantara, Martha	PDG	424-646-7266	malcantara@lawa.org	1
	Arciga, Esmeralda	AUSCOM	213-434-7176	earciga@austin-ind.com	1
	Arrieta, Alfredo	PDG	424-646-7434	aarrieta@lawa.org	1
	Bargsten, Richard	LAWA	213-305-9214	rbargsten@lawa.org	1
	Bentley, Steven	LAWA	424-646-7513	sbentley2@lawa.org	1
	Berny, Marouane	PDG	424-646-7126	mberny@lawa.org	1
	Billesbach, Richard	LAWA	310-877-0815	rbillesbach@lawa.org	1
	Cao, Thomas	PDG	310-729-3509	tcao@lawa.org	1
	Cawyer, Rebecca	LAWA	424-646-5857	rcawyer@lawa.org	1
	Ching, Frank	PDG	310-729-3221	fching@lawa.org	1
	Cole, Jimmy	AUSCOM	424-646-9161	jjcole@austin-ind.com	1
	Davis, Stephanie	PDG	424-646-7187	sdavis2@lawa.org	1
	Figueroa, Regielito	LAWA	424-646-7636	rfigueroa@lawa.org	1
	Goshtasbi, Fred	LAWA	424-646-7571	fgoshtasbi@lawa.org	1
	Gurung, Ishwar	PDG	424-646-7528	igurung@lawa.org	1
	Hebert, Robert	LAWA	424-646-5810	rhebert@lawa.org	1
	Hellwig, Thomas	PDG	424-646-7576	thellwig@lawa.org	1
	Hendriksen, Angela	AUSCOM	424-646-9178	ahendriksen@austin-ind.com	1
	Henning, Charles	PDG	424-646-7024	chenning@lawa.org	1
	Hentschel, Rick	PDG	424-646-7538	rhentschel@lawa.org	1
	Hirsch, Paul	PDG	424-646-6993	phirsch@lawa.org	1
	Kanda, Surinder	PDG	424-646-7352	skanda@lawa.org	1
	Kolk, Brandon	PDG	310-846-3096	bkolk@lawa.org	1
	Kourkos, Samuel	LAWA	424-646-6789	skourkos@lawa.org	1
	Li, Stacey	AUSCOM	424-646-9160	sli@austin-ind.com	1
	Lopez, Gerardo	LAWA	424-646-5786	glopez@lawa.org	1

				Transmittal	
				Standard LAWA Transmittal V3 - Main	
Lopez, Patricia	PDG	310-846-3096		plopez@lawa.org	1
Martikian, Mary	AUSCOM	424-646-9166		mmartikian@austin-ind.com	1
Maza, Alfonso	AUSCOM	310-343-1378		amaza@austin-ind.com	1
Maza, Janet	AUSCOM	602-421-8471		jmaza@austin-ind.com	1
Melton, Ron	PDG	310-908-2258		rmelton@lawa.org	1
Morales, Cecilia	PDG	424-646-6791		cmorales@lawa.org	1
Morgan, Jeff	LAWA	626-622-8302		jmorgan@lawa.org	1
Naguib, Christine	AUSCOM			cnaguib@Austin-Ind.com	1
Neely, David	AUSCOM	281-404-0700		dneely@austin-ind.com	1
Ohanian, Sepou	LAWA	310-877-0247		sohanian@lawa.org	1
ONeill, Sean	LAWA			SONEILL@lawa.org	1
Patel, Deepak	PDG	310-678-3743		dpatel2@lawa.org	1
Patel, Raja	PDG	310-628-6468		rpatel@lawa.org	1
Patel, Sudhir	PDG	424-646-7153		spatel@lawa.org	1
Paulis, Pohl	PDG	949-295-1566		ppaulis@lawa.org	1
Plagar, Mayra	AUSCOM	424-646-6588		mplagar@austin-ind.com	1
Powers, Crystal	PDG	424-646-7534		cpowers@lawa.org	1
Rastegar, AJ	PDG	424-646-7089		arastegar@lawa.org	1
Rios, Antonio	LAWA	213-598-7306		arios@lawa.org	1
Roa, Ed	PDG	310-846-3096		eroa@lawa.org	1
Solis, Adriana	PDG	424-646-7041		ASOLIS2@lawa.org	1
Villarica, Bernardo	LAWA	323-384-8722		bvillarica@lawa.org	1
White, Deneen	PDG	760-444-5536		DWHITE2@lawa.org	1
Wilson, Lenny	PDG	424-646-7355		lwilson@lawa.org	1

**File Code / Remarks:**

DA-5262 Terminal Cores and APM Interface  
5.4



# Change Directive

LAWA Contract No: DA-5262

Contract Title: Terminal Cores and APM Interface (DA-5262)

Contractor Address:  
3535 Travis Street  
Suite 300  
Dallas, TX 75204-1466

Contractor: Lance Yamashita  
Austin Commercial LP

**Change Directive Number: 0033 R-00**

**Change Directive Title: T5.5 NELA DAS**

Date: 1/28/2021

Contact: Devraj Patel

Contact No:

CGMP No:	Sub Project: T5.5	Terminal:
----------	-------------------	-----------

Reference Document:

RFI No: N/A

CPCN No:

Bulletin No: N/A

Field Directive No: N/A

Other Reference: N/A

1.  Contractor is directed to provide a Contractor Change Request(CCR) within 21 days for the
  - Extra Work defined herein.
  - Changed Work defined herein.
  
2.  CPCN No(s) is determined to have merit.
  
3.  Proceed with the work described herein for an amount Not to Exceed \$ until such time as work is completed or a mutually agreed price can be negotiated. Time and Material (T&M) records are to be maintained and submitted for all of this work performed prior to completion of the negotiations or up to the Not-To-Exceed amount, whichever comes first. Contractor shall provide forty-eight(48) hour notice to LAWA Inspector before proceeding with the Work. Costs associated with the T&M authorization shall fully comply with General Conditions - ( Pricing - Time and Materials). Contractor shall submit to the LAWA Inspector for signature a daily itemization of all such costs in such form as LAWA requires. Contractor shall report when the T&M reaches 80% of the authorized amount under this Change Directive. T&M changes will be reimbursed based upon the cost reimbursable guidelines outlined in the pricing section of the Contract under General Conditions , Pricing.
  
4.  Proceed as described herein on an Agreed/Lump Sum Price Basis in the amount of \$.
  
5.  Contractor is directed to Stop/Eliminate the work immediately and provide a credit Contractor Change Request(CCR) within 21 days for the applicable work eliminated herein.





# Change Directive

Change Directive Number: 0033 R-00  
Change Directive Title: T5.5 NELA DAS

Austin Commercial LP  
3535 Travis Street  
Suite 300  
Dallas, TX 75204-1466

## Direction:

This Change Directive is directing ACLP to provide pricing for the Design and Construction components for the NELA DAS Program, which will be negotiated and incorporated into the T5.5 Core Project. ACLP is being directed to provide pricing based on the scope of work table below, See attached reference exhibits as well as scope descriptions below.

### Task Scope Detail/Notes:

Departures Level Custom Canopy Panels

- (4) panels per detail - Riser and Sleeves, Riser Conduit (R-1)
  
- (5) 4" Risers/Sleeves to 4th floor Ceiling (vicinity of IDF 05-C15-050), Riser Conduit (R-2)
  
- (5) 4" Risers/Sleeves to 4th floor Ceiling (vicinity of IDF 05-C14-110), Riser Conduit (R-3)
  
- (5) 4" Risers from L5 Ceiling to L6 Ceiling (vicinity of IDF 05-C15-050), Riser Conduit (R-4)
  
- (5) 4" Risers from L5 Ceiling to L6 Ceiling (vicinity of IDF 05-C14-110), Riser Conduit (R-5)
  
- (5) 4" Risers from L1 Ceiling to L3 Ceiling (vicinity of IDF 03-C13-040), Riser Conduit (R-6)
  
- (5) 4" Risers from L1 Ceiling to L3 Ceiling (vicinity of IDF 03-C16-010), Riser Conduit (R-7)
  
- (1) 4" Riser from L1 Ceiling to L3 Ceiling (@ north arrivals walkway DMRU), Riser Conduit (R-8)
  
- (1) 4" Riser from L1 Ceiling to L3 Ceiling (@ south arrivals walkway DMRU), Riser Conduit (R-9)
  
- (1) 4" Risers from L4 Ceiling to L3 Ceiling (@ R-7), Exterior Core/Sleeve (S-A)
  
- (1) 4" sleeve @ (R-7) to exterior, Exterior Core/Sleeve (S-B)
  
- (1) 4" sleeve @ (R-8) to exterior, Exterior Core/Sleeve (S-C)
  
- (1) 4" sleeve @ (R-7) to exterior, Exterior Core/Sleeve (S-D)
  
- (1) 4" sleeve @ (R-8) to exterior

See attachd support documents



Change Directive

Change Directive Number:  
Change Directive Title:

0033 R-00  
T5.5 NELA DAS

Austin Commercial LP  
3535 Travis Street  
Suite 300  
Dallas, TX 75204-1466

---

---

Authorization

By: Ishwar Gurung Feb 1, 2021  
Controls Manager

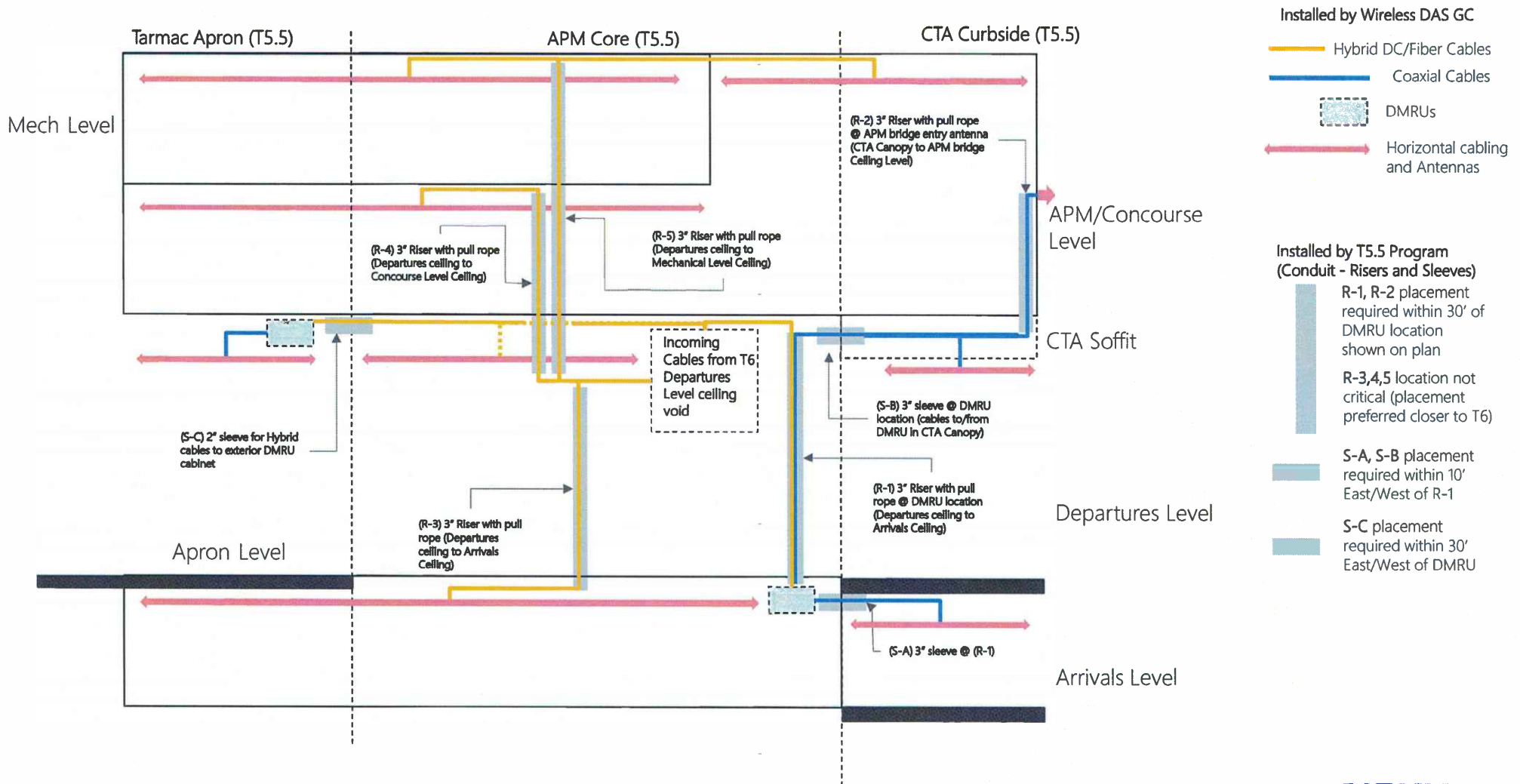
By: DMP Charles Henning Feb 2, 2021  
Project/Construction Manager

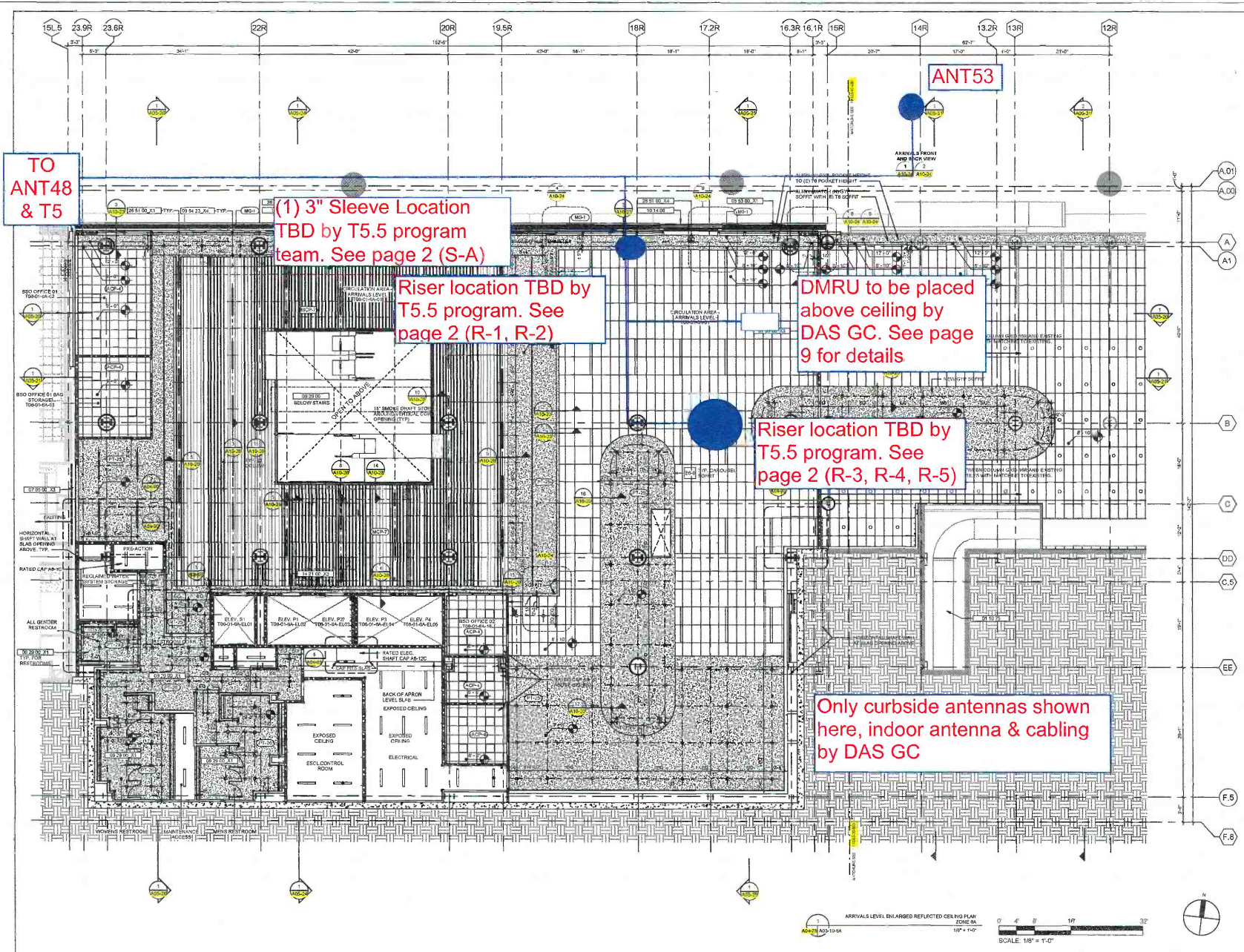
By: Hans Thilenius Feb 2, 2021  
Hans Thilenius  
TDIP Deputy Executive Director

**Note:** Standard Board authorized amount  
is up to \$150,000

**LAX T5.5 CORE DAS Scope Matrix 1-7-21**

Task #	Task	DAS Group	LAWA/Developer	Scope Detail/Notes	R=Responsible
<b>A</b>	<b>IDFs, Antenna, Cables, and Supports</b>				
1	N/A	R		No Scope by T5.5 Program	
<b>B</b>	<b>Risers, Sleeves, Misc</b>				
1	Riser Conduit (R-1)		R	(1) 3" Riser with pull rope @ DMRU location (Departures ceiling to Arrivals Ceiling) (see das scope package pg 2)	
2	Riser Conduit (R-2)		R	(1) 3" Riser with pull rope @ APM bridge entry antenna (CTA Canopy to APM Bridge Ceiling Level) (see das scope package pg 2)	
3	Riser Conduit (R-3)		R	(1) 3" Riser with pull rope (Departures Ceiling to Arrivals Ceiling) (see das scope package pg 2)	
4	Riser Conduit (R-4)		R	(1) 3" Riser with pull rope (Departures ceiling to Concourse Level Ceiling) (see das scope package pg 2)	
5	Riser Conduit (R-5)		R	(1) 3" Riser with pull rope (Departures ceiling to Mechanical Level Ceiling) (see das scope package pg 2)	
7	Exterior Core/Sleeve (S-A)		R	(1) 3" sleeve @ (R-1) (see das scope package pg 2)	
8	Exterior Core/Sleeve (S-B)		R	(1) 3" sleeve @ DMRU location (cables to/from DMRU in CTA Canopy) (see das scope package pg 2)	
9	Exterior Core/Sleeve (S-C)		R	(1) 2" sleeve for hybrid cables to exterior DMRU cabinet (see das scope package pg 2)	
9	Departures Level Custom Canopy Panels		R	(2) panels with custom cutout per detail (see das scope package pg 7 detail 2)	
<b>SD</b>	<b>Support Documents</b>				
	LAX T5.5 DAS SCOPE PACKAGE 1-7-21			riser and sleeve schematic, antenna and cable plans, typical mounting details	





### KEYNOTES

01 TO 02	EXISTING OVERSIZED CONVEYOR TO REMOVE
03 TO 04	STAINLESS STEEL EXPANSION COVER AND GRATE
05 TO 06	ROOFBOARD JOINT CEILING COVER ASSEMBLY
07 TO 08	CYPRIN BOARD
09 TO 10	TRIP WITH RESISTANT COVER BOARD
11 TO 12	3/4" X 1/4" INFIL PANEL 1/8" QUALITY COVER
13 TO 14	BRASS
15 TO 16	BRASS AND IDENTIFYING CEILING
17 TO 18	CEILING BRACKET LIGHT
19 TO 20	1" LIGHT FIXTURE
21 TO 22	1" LIGHT FIXTURE
23 TO 24	1" LIGHT FIXTURE
25 TO 26	1" LIGHT FIXTURE
27 TO 28	1" LIGHT FIXTURE
29 TO 30	1" LIGHT FIXTURE
31 TO 32	1" LIGHT FIXTURE
33 TO 34	1" LIGHT FIXTURE
35 TO 36	1" LIGHT FIXTURE
37 TO 38	1" LIGHT FIXTURE
39 TO 40	1" LIGHT FIXTURE
41 TO 42	1" LIGHT FIXTURE
43 TO 44	1" LIGHT FIXTURE
45 TO 46	1" LIGHT FIXTURE
47 TO 48	1" LIGHT FIXTURE
49 TO 50	1" LIGHT FIXTURE
51 TO 52	1" LIGHT FIXTURE
53 TO 54	1" LIGHT FIXTURE
55 TO 56	1" LIGHT FIXTURE
57 TO 58	1" LIGHT FIXTURE
59 TO 60	1" LIGHT FIXTURE
61 TO 62	1" LIGHT FIXTURE
63 TO 64	1" LIGHT FIXTURE
65 TO 66	1" LIGHT FIXTURE
67 TO 68	1" LIGHT FIXTURE
69 TO 70	1" LIGHT FIXTURE
71 TO 72	1" LIGHT FIXTURE
73 TO 74	1" LIGHT FIXTURE
75 TO 76	1" LIGHT FIXTURE
77 TO 78	1" LIGHT FIXTURE
79 TO 80	1" LIGHT FIXTURE
81 TO 82	1" LIGHT FIXTURE
83 TO 84	1" LIGHT FIXTURE
85 TO 86	1" LIGHT FIXTURE
87 TO 88	1" LIGHT FIXTURE
89 TO 90	1" LIGHT FIXTURE
91 TO 92	1" LIGHT FIXTURE
93 TO 94	1" LIGHT FIXTURE
95 TO 96	1" LIGHT FIXTURE
97 TO 98	1" LIGHT FIXTURE
99 TO 100	1" LIGHT FIXTURE

### RCP PLAN GENERAL NOTES

- FOR SPRINKLER AND OTHER FIRE PROTECTION DEVICES, PLEASE SEE FIRE PROTECTION CODES, TYPICAL.
- FOR FUTURE TYPES AND LOCATIONS RAIL BACK OF HOUSE, UTILITY AREAS, EXPRESS STAIRWAYS, AND APRON LEVEL, SEE AREA 5 - ELECTRICAL LIGHTING DRAWINGS, TYPICAL.
- PROVIDE ACCESS PANELS AND MECH/ELECTRICAL W/BOX AND FAN COIL UNIT BY SUSPENDED CEILING BOARD CENTER, TYPICAL.
- FOR CEILING ACCESS PANELS TYPE AND LOCATION, PLEASE SEE SPECIFICATIONS AND MECH/ELECTRICAL DRAWINGS. ACCESS PANELS BELOW ARE ONLY FOR MECHANICAL PURPOSES ONLY, UNLESS OTHERWISE INDICATED.

### WALL PARTITION LEGEND

(S)	PARTITION OR FURRING
(W)	WALL PARTITION OR FURRING
(1R)	1 HR PARTITION
(2HR)	2 HR PARTITION
(3HR)	3 HR PARTITION

### REFLECTED CEILING PLAN LEGEND

(S)	SUPPLY AIR DIFFUSER	(R)	RETURN AIR DIFFUSER
(S)	SLOT AIR DIFFUSER	(2X)	2X LAMP LENS FIXTURE
(S)	SPRINKLER	(S)	2X LAMP LENS FIXTURE
(S)	FIRE ALARM STROBE	(T)	2X TROFFER LIGHT
(S)	SECURITY CAMERA	(D)	DOVE LIGHTING
(S)	RECESSED LIGHT FIXTURE, SQUARE	(A)	WIFI ACCESS POINT
(S)	RECESSED LIGHT FIXTURE, RECT	(S)	CEILING SPEAKER
(S)	EMERGENCY EXIT FEATURE	(S)	HANGING PENDANT LIGHTING FEATURE
(S)	CEILING ACCESS DOORS AND FRAMES	(S)	FINISHED CEILING HIBERT J.F.T.
(S)	RECESSED DOWNLIGHT	(S)	SW. ID. CEILING
(S)	LINEAR PENDANT LIGHT	(S)	LINEAR METAL CEILING SYSTEM
(S)	2X ADJUSTABLE CEILING TILE	(S)	2X ACoustICAL CEILING TILE

### KEY PLAN

PROJECT DATE: 08/08/2019, 10:30 AM

**AUSTIN COMMERCIAL**  
5901 W Century Blvd #900  
Los Angeles, CA 90045  
phone: 310-421-0280

**AC MARTIN**  
444 South Flower Street Suite 1200  
Los Angeles, CA 90071  
phone: 213-683-1900

PROFESSIONAL SEAL

REVISIONS

NO.	DESCRIPTION
1	20/02/18 (S)D SUBMITTAL
2	02/02/18 (S)P SCHEMATIC DESIGN
3	04/02/18 (S)P PRELIMINARY DESIGN
4	11/02/18 (S)P LUMP SUM CONTRACT
5	11/02/18 (S)P LUMP SUM CONTRACT
6	11/02/18 (S)P LUMP SUM CONTRACT
7	11/02/18 (S)P LUMP SUM CONTRACT
8	11/02/18 (S)P LUMP SUM CONTRACT

ISSUES

Rec'd: 04/22/2020  
100% RCP PLAN

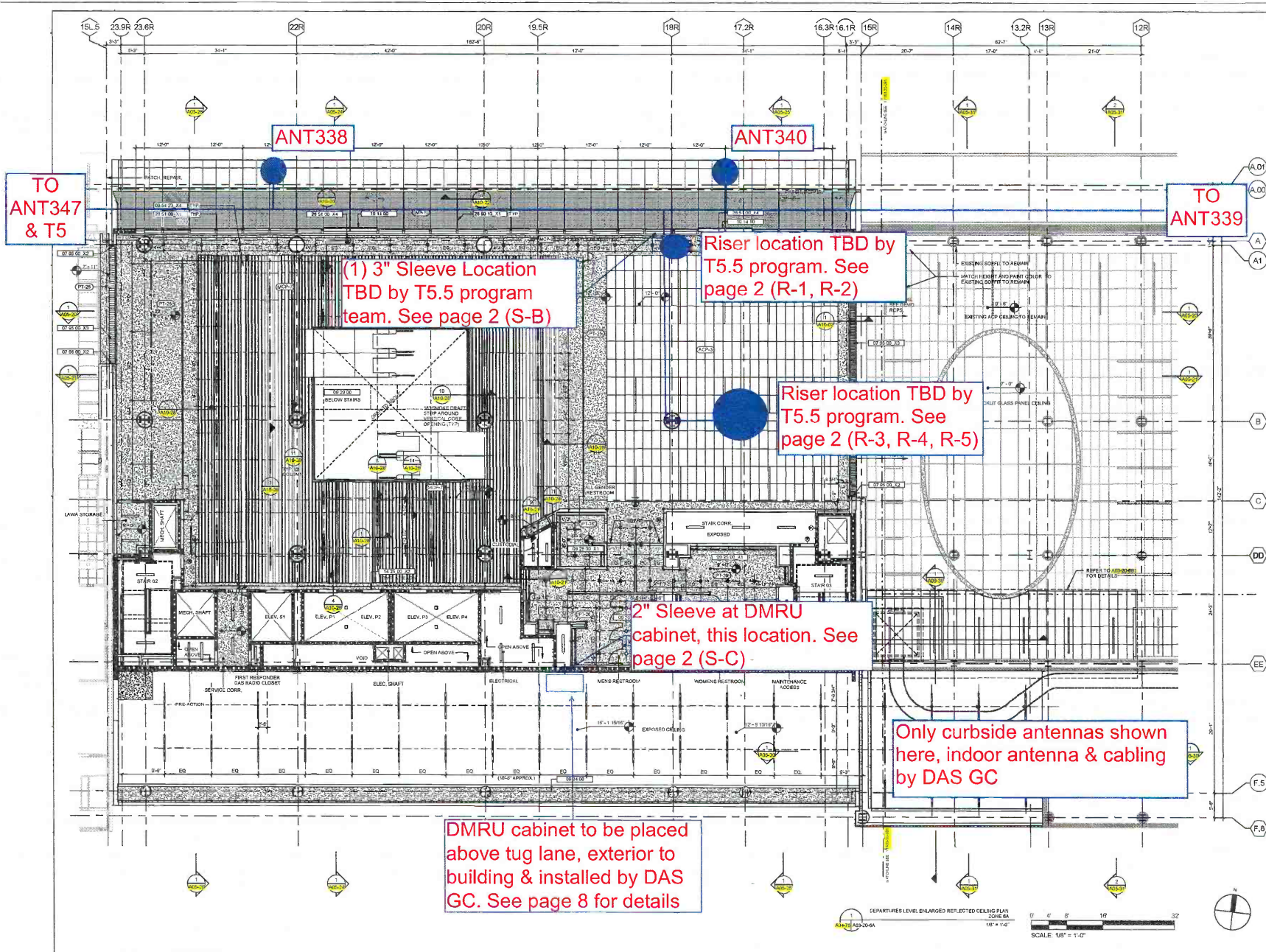
**LAVNY XPMD**

Los Angeles World Airports  
Terminal Concourse and Intercessions - T5  
ARRIVALS LEVEL ENLARGED REFLECTED CEILING PLAN ZONE 6A  
600 WORLD WAY LOS ANGELES, CA 90038

DATE: 08/08/2019  
DRAWN BY: [Name]  
CHECKED BY: [Name]  
DATE: 08/08/2019

SCALE: 1/8" = 1'-0"

**A03-10-6A**

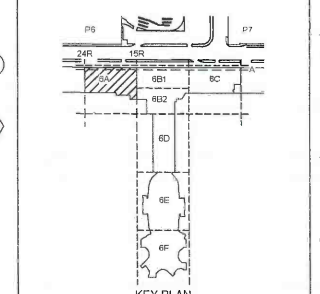


KEYNOTES	
07 25 05 X2	EXPANSION JOINT WALL COVER ASSEMBLY
07 25 05 X3	EXPANSION JOINT CEILING COVER ASSEMBLY
07 25 05	DOOR LOCATIONS - TYPICAL
07 25 05	GLASS BOARD
09 25 05 X1	5/8" WATER RESISTANT GYPSUM BOARD
09 24 23 X4	BRITFL PANEL FOR UTILITY CHANNE
10 14 05	GLASS
10 14 10	GRAPHS AND IDENTIFYING DEVICES
14 21 05 X3	TELEVISION INDICATOR LIGHT
08 25 13 X1	EXTENSION LIGHTING
08 25 05 X1	LIGHT FIXTURE
08 25 05 X4	TEXT SIGN

- RCP PLAN GENERAL NOTES**
- FOR SPRINKLERS AND OTHER FIRE PROTECTION DEVICES, PLEASE SEE FIRE PROTECTION DRAWING TYPICAL.
  - FOR FIXTURE TYPES AND LOCATIONS IN ALL BACK OF HOUSE, UTILITY AREAS, STAIRS, STAIRWELLS, AND ARCHIVE LEVELS, SEE ELECTRICAL, LIGHTING DRAWINGS, TYPICAL.
  - PROVIDE ACCESS PANELS AT EVERY MECHANICAL VAN BOX AND FAN COIL UNIT IN SUBMERGED GYP-SUM BOARD CEILING, TYPICAL.
  - FOR CEILING ACCESS PANELS, TYPE AND LOCATION, PLEASE SEE SPECIFICATIONS AND MECH. ELEC. DIVISION ACCESS PANELS, IF SHOWN, ARE ONLY FOR GRAPHICAL PURPOSES ONLY, UNLESS OTHERWISE INDICATED.

- WALL PARTITION LEGEND**
- (S) PARTITION OR FURRING
  - WALL PARTITION OR FURRING
  - 1 HR. PARTITION
  - 2 HR. PARTITION
  - 3 HR. PARTITION

- REFLECTED CEILING PLAN LEGEND**
- SUPPLY AIR DIFFUSER
  - RETURN AIR DIFFUSER
  - SLOT AIR DIFFUSER
  - SPRINKLER
  - FIRE ALARM STROBE
  - SECURITY CAMERA
  - RECESSED LIGHT FIXTURE, SQUARE
  - RECESSED LIGHT FIXTURE, LINEAR
  - EMERGENCY EXIT FIXTURE
  - CEILING ACCESS DOORS AND FRAMES
  - REFLECTED PENDANT LIGHT
  - LINEAR PENDANT LIGHT
  - 2x4 INDUSTRIAL CEILING TILE
  - 2x2 LAY-FL LENS FIXTURE
  - 2x4 LAY-FL LENS FIXTURE
  - 2x4 TRANSFER LIGHT
  - GOVE LIGHTING
  - WFR ACCESS POINT
  - 2x4 P-8 SPEAKER
  - HANGING PENDANT LIGHTING FIXTURE
  - FINISHED CEILING HEIGHT AT F.
  - 5/8" BD. CEILING
  - UPPER METAL CEILING SYSTEM
  - 2x2 INDUSTRIAL CEILING TILE



TO ANT347 & T5

TO ANT339

(1) 3" Sleeve Location TBD by T5.5 program team. See page 2 (S-B)

Riser location TBD by T5.5 program. See page 2 (R-1, R-2)

Riser location TBD by T5.5 program. See page 2 (R-3, R-4, R-5)

2" Sleeve at DMRU cabinet, this location. See page 2 (S-C)

Only curbside antennas shown here, indoor antenna & cabling by DAS GC

DMRU cabinet to be placed above tug lane, exterior to building & installed by DAS GC. See page 8 for details

**AUSTIN COMMERCIAL**  
 5601 W Century Blvd #900  
 Los Angeles, CA 90045  
 phone: 310-421-0269

**AG MARTIN**  
 444 South Flower Street Suite 1200  
 Los Angeles, CA 90071  
 phone: 213-685-1990

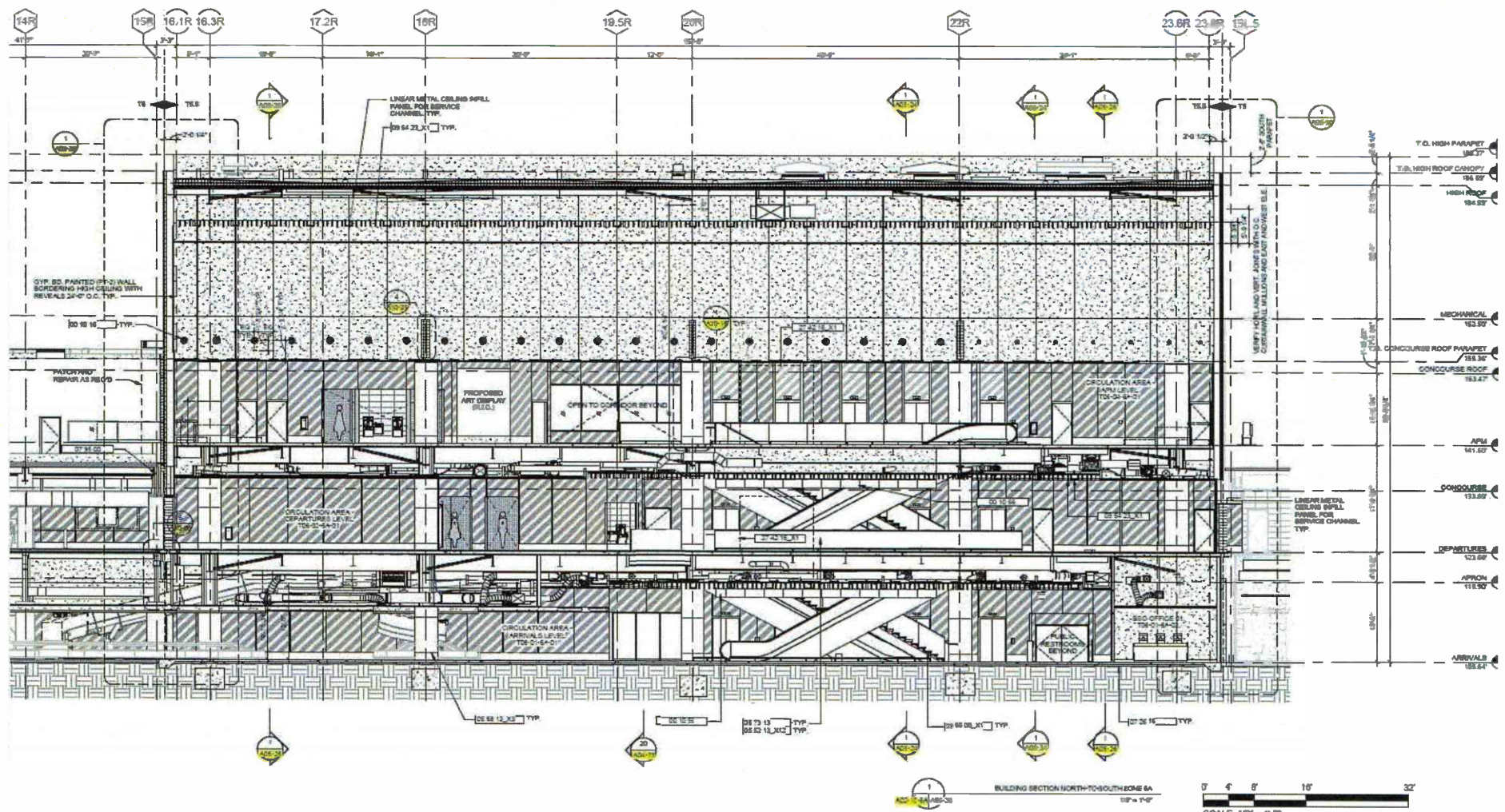
PROFESSIONAL SEAL

NO.	REVISIONS	DATE
1	ISSUES	
2		
3		
4		
5		
6		
7		
8		
9		

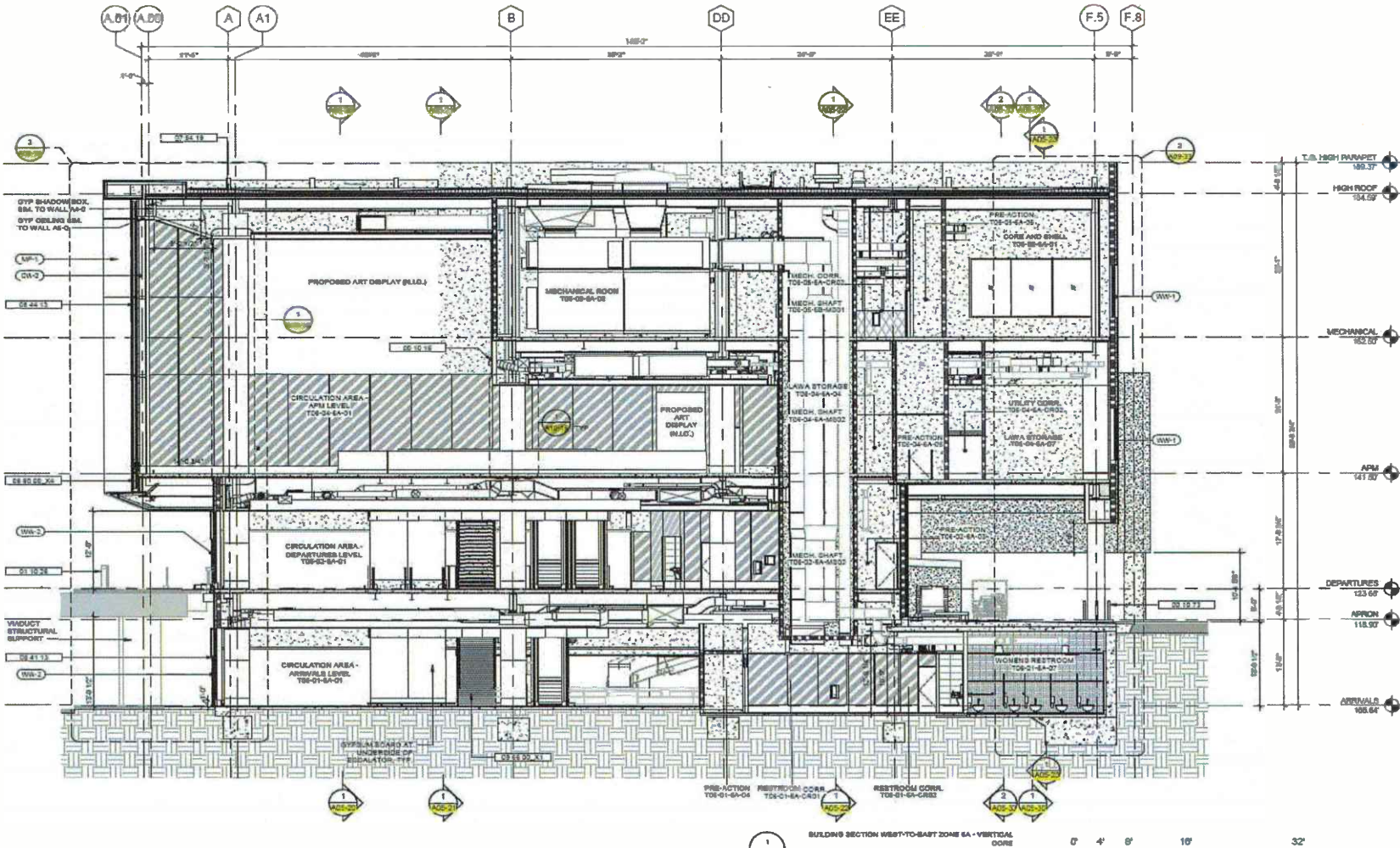
NO.	ISSUES	DATE
1	ISSUES	
2		
3		
4		
5		
6		
7		
8		
9		

**LAVNY XPMD**  
 Los Angeles World Airports  
 601 WORLD WAY LOS ANGELES, CA 90045

DEPARTURES LEVEL ENLARGED REFLECTED CEILING PLAN ZONE 9A  
 601 WORLD WAY LOS ANGELES, CA 90045  
 DATE: 04/22/2020  
 SCALE: 1/8" = 1'-0"  
 A03-20-6A

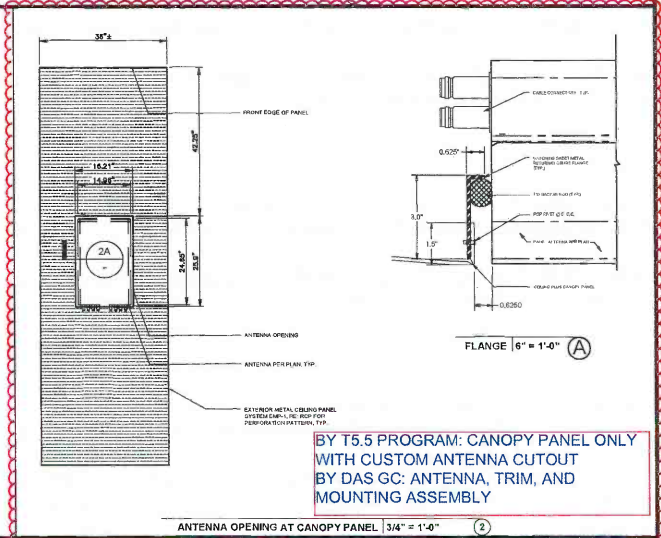
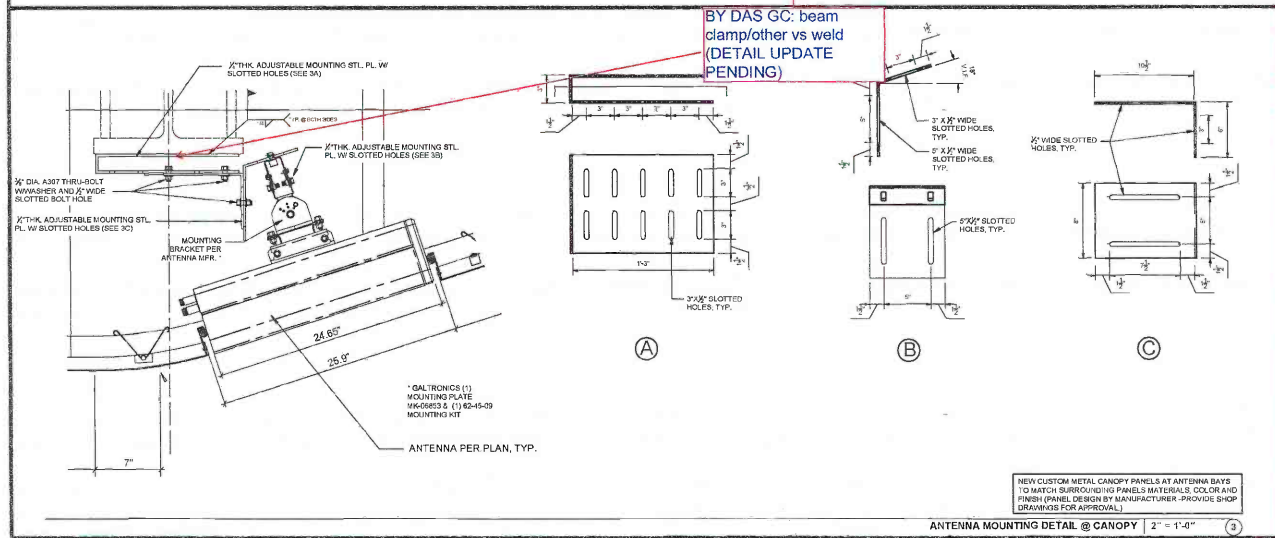
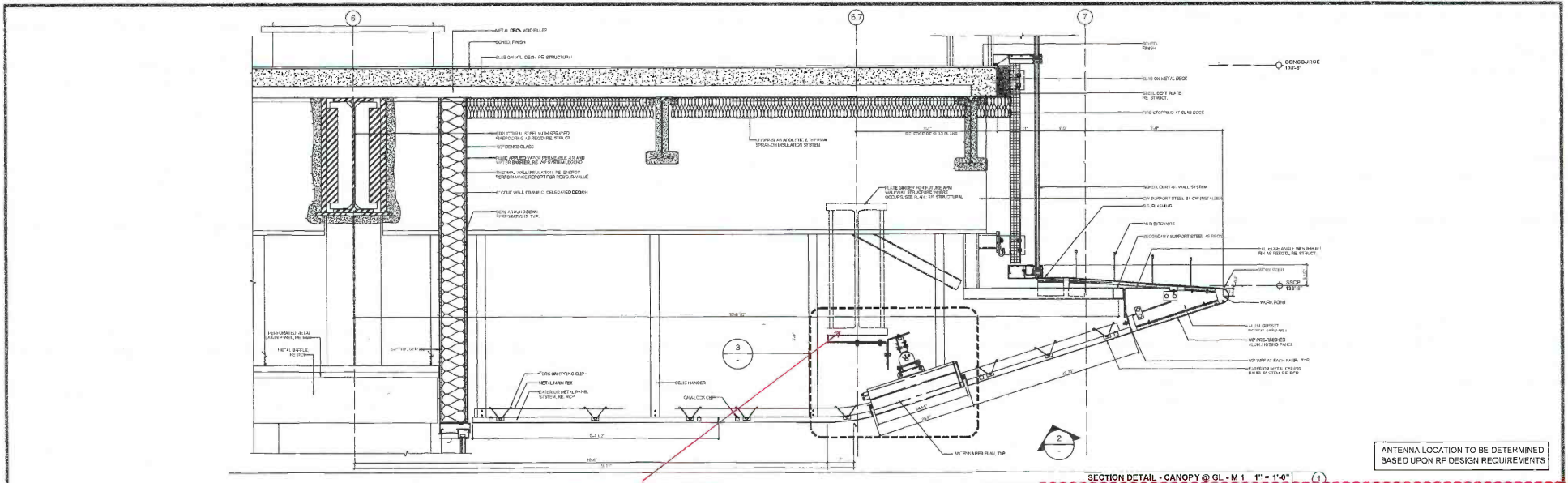


For reference only

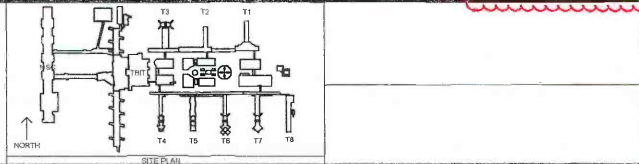


T5.5 West to East Section

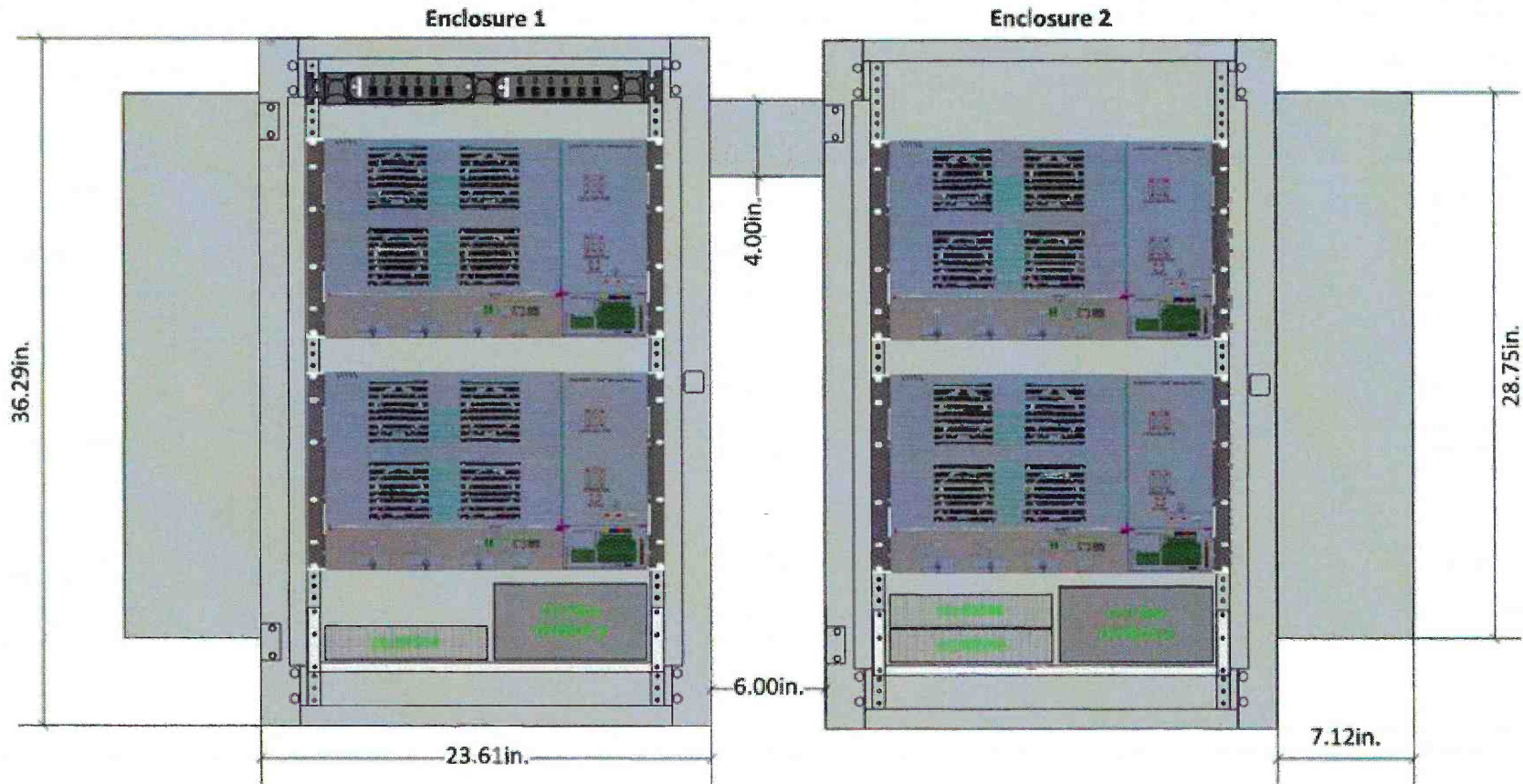




2302 MIDWAY AVE. IRVINE, CA 92614 TEL: 949-457-9333 FAX: 949-457-9331		
REV.	DESCRIPTION	DATE
0	FOR REVIEW	10/23/20



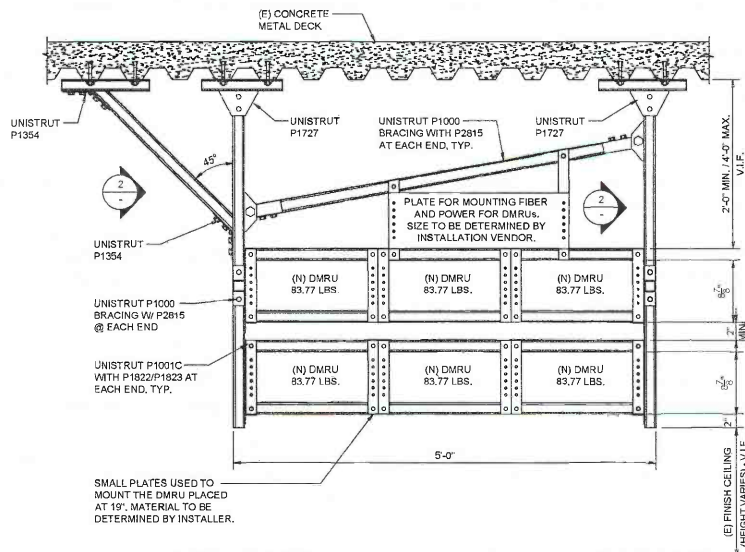
		MULTI-CARRIER INFRASTRUCTURE PROJECT	
SUBMITTED BY SR. COMMUNICATIONS ENGINEER	CHECKED DATE: 10/29/2020	PLAN SET NUMBER SHEET: D-9	APPROVED BY INFORMATION SYSTEMS MANAGER II
DRAWN SCALE SHEET NO.	DATE: 10/29/2020	SHEET NO.	SHEET: D-9
SHEET NO.	FILE NAME: Canopy Antenna Concept 3 10/29/20	CANOPY CONCEPT 3B	



Calculation Summary Enclosure 1				
Description	Dimensions (H"x W"x D")	QTY	Total Weight (lbs)	Total Power Consumption Max (W)
Hoffman Enclosure	(36" x 24" x 24")	1	95	
Direct Air Cooling	(28.75" x 12" x 7.12")	1	40	
Corning DMRU	(10.5" x 17.5" x 15.75")	2	141.1	800
VS Receiver RX 554-AC	(8.5" x 12" x 1.75")	1	2.4	5
VS OCPBOX-4	(8" x 6" x 4")	1	2	
Corning CCH-01U	(1.75" x 19" x 17")	1	10	
Chatsworth 2U Shelf	(2.19" x 17.25" x 10")	1	5	
Misc Splitter/Combiners			5	
<b>Total</b>			<b>300.5</b>	<b>805</b>

Calculation Summary Enclosure 2				
Description	Dimensions (H"x W"x D")	QTY	Total Weight (lbs)	Total Power Consumption Max (W)
Hoffman Enclosure	(36" x 24" x 24")	1	95	
Direct Air Cooling	(28.75" x 12" x 7.12")	1	40	
Corning DMRU	(10.5" x 17.5" x 15.75")	2	141.1	800
VS Receiver RX 554-AC	(8.5" x 12" x 1.75")	1	2.4	5
VS Receiver RX 548-DC	(9.8" x 9.45" x 4.19")	1	5	30
VS OCPBOX-4	(8" x 6" x 4")	2	4	
Chatsworth 2U Shelf	(2.19" x 17.25" x 10")	1	5	
Misc Splitter/Combiners			5	
<b>Total</b>			<b>297.5</b>	<b>835</b>

OUTDOOR DMRU CABINETS (by DAS GC)



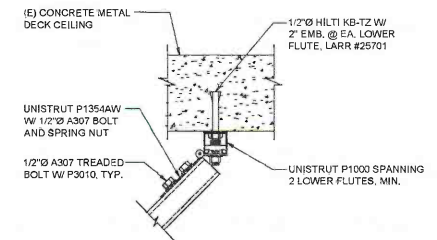
NOTE: PROVIDE 5x7 CLEAR WORKING SPACE BELOW THE DMRUS FOR LADDER/LIFT FOR INITIAL INSTALLATION

NOTE: SIDE CLEARANCE TO COVER FOOTPRINT/CONSTRUCTABILITY OF DECK CONNECTIONS ABOVE.

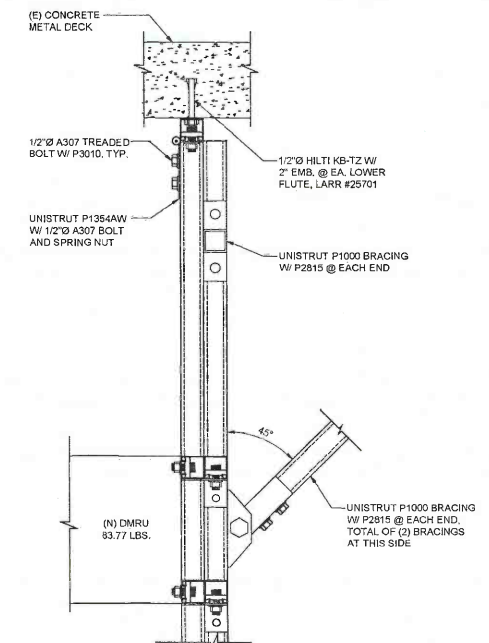
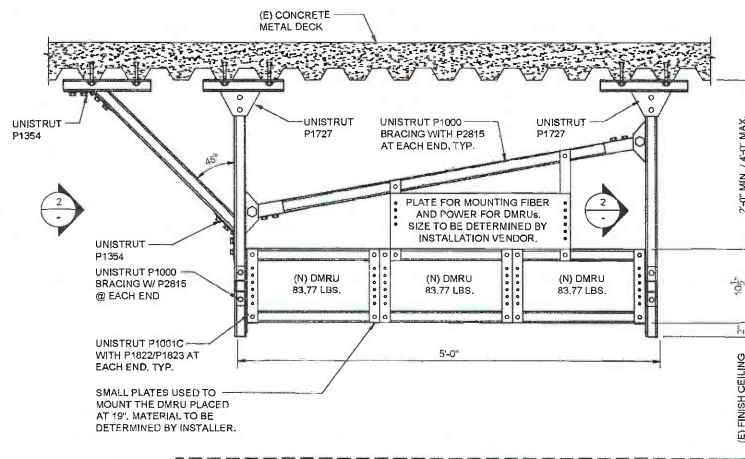
NOTE: PROVIDE MORE THAN 16" CLEAR WORKING SPACE AT FRONT DOORS OF DMRUs

NOTE: PROVIDE 30" MINIMUM CLEAR WORKING SPACE IN FRONT OF DMRUs

NOTE: PROVIDE 6" MINIMUM CLEAR WORKING SPACE IN REAR OF DMRUs



1 DMRU CEILING MOUNT BRACING  
SCALE: NO SCALE

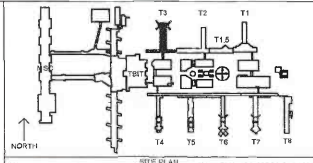


2 DMRU CEILING MOUNT SECTION  
SCALE: NO SCALE

3 DMRU CEILING MOUNTS  
SCALE: 1/8" = 1'-0"

### DMRU CEILING MOUNT

INDOOR DMRU MOUNT  
(by DAS GC)



**DELTA GROUPS**  
**ENGINEERING, INC.**  
CONSTRUCTION DIVISION  
2302 MIDWAY AVE., IRVINE, CA 92614  
TEL: 949-435-0333 FAX: 949-432-0331

REV.	DESCRIPTION	DATE

<p>Los Angeles World Airports</p> <p><b>TERMINAL 3</b> <b>MULTI-CARRIER</b> <b>INFRASTRUCTURE PROJECT</b> WORLDWAY 300, LOS ANGELES, CA 90045</p>	
<p>SUBMITTED BY</p> <p>DL COMMUNICATIONS ENGINEER</p>	<p>APPROVED BY</p> <p>INFORMATION SYSTEMS MANAGER #</p>
<p>DATE</p> <p>SCALE</p> <p>SND LOCATIONS</p> <p>FILE NAME</p>	<p>PLAN SET NUMBER</p> <p>SHEET</p> <p>DATE</p> <p>9/9/2020</p> <p>999-0020</p> <p>A-184</p>

T:\Work\AA\_T2LAX\_T3\_OSE Drawings\PROJECT\AA-DMRU MOUNTING.dwg September 03, 2020 - 7:54pm Tim Brown





# Austin Commercial, LP

100% Employee Owned

## TRANSMITTAL

No. 7682

**PROJECT:** LAX TERMINAL CORES & APM INTERFACE (DA-5262)

**DATE:** 03/24/2021

**OWNER PROJ #:** DA-5262

**DUE DATE:**

**JOB:** 1801

**TO:** LOS ANGELES WORLD AIRPORTS  
7301 WORLD WAY WEST  
LOS ANGELES CA 90045

**FROM:** Austin Commercial, LP  
6101 WEST IMPERIAL HIGHWAY SUITE  
200  
LOS ANGELES CA 90045

**RE:** CCR 0075.1 - TBIT NELA DAS Design Proposal

**ATTN:** Chuck Henning

WE ARE SENDING:	SUBMITTED FOR:	ACTION TAKEN:
<input type="checkbox"/> Submittal	<input checked="" type="checkbox"/> Approval	<input type="checkbox"/> Approved as Submitted
<input type="checkbox"/> Shop Drawings	<input type="checkbox"/> Your Use	<input type="checkbox"/> Approved as Noted
<input type="checkbox"/> Letter	<input type="checkbox"/> As Requested	<input type="checkbox"/> Returned After Loan
<input type="checkbox"/> Prints	<input type="checkbox"/> Review and Comment	<input type="checkbox"/> Resubmit
<input type="checkbox"/> Change Order		<input type="checkbox"/> Submit
<input type="checkbox"/> Plans	<b>SENT VIA:</b>	<input type="checkbox"/> Returned
<input type="checkbox"/> Samples	<input checked="" type="checkbox"/> Attached	<input type="checkbox"/> Returned for Corrections
<input type="checkbox"/> Specifications	<input type="checkbox"/> Separate Cover Via:	<input type="checkbox"/> Other:
<input checked="" type="checkbox"/> Other: CCR Proposal		

Item	Qty	Date	Reference	Rev.	Description	Comments	Status
CCR Proposal	1	03/24/2021			CCR 0075.1 - TBIT NELA DAS Design Proposal		In Review

**NOTES:** Please see attached CCR 0075.1 - TBIT NELA DAS Design Proposal for your review . 67 pages including transmittal.

Signed: Esmeralda Arciga Date: 03/24/2021  
Esmeralda Arciga 9:42:49 AM

Received By: \_\_\_\_\_ Date: \_\_\_\_\_

**CC:** Barry Staehs  
Brian Weinbaum  
JAMES COLE  
Janet Maza  
John Pekarovic  
Ishwar Gurung  
Sudhir Patel

<b>DOC CONTROL</b>
<b>Mar 24, 2021</b>
<b>10:17 am</b>
<b>RECEIVED</b>



# Austin Commercial

An Austin Industries Company

March 24, 2021

Los Angeles World Airports  
6101 W. Imperial Hwy., Suite 200  
Los Angeles, CA 90045  
Via email: [chenning@lawa.org](mailto:chenning@lawa.org)

Austin Commercial, L.P.  
Construction Manager/General Contractor

5901 W. Century Blvd, Suite 600  
Los Angeles CA 90045  
310.421.0269 Office  
310.421.0260 Fax  
[www.austincommercial.com](http://www.austincommercial.com)  
CA Lic. #806038

Attn: Mr. Charles Henning

**RE: Terminal Cores and APM Interface DA-5262  
CD-0013 TBIT Core – NELA DAS  
CCR 0075.1**

Dear Charles:

ACLP is pleased to present our pricing proposal for CCR 0075 – CD-0013 TBIT Core NELA DAS. As requested in CD-0013, this Contractor Change Request (CCR) includes pricing for the AC Martin Design portion of the work. Please refer to Attachment #1 and #2 which summarizes the scope and fees for ACLP and its Design Partner to execute the Design as outlined in CCR.

The CCR breakdown is as follows:

Fixed price design cost \$23,109.92  
**Total \$23,109.92**

This is a Lump Sum proposal per GC-61 sub part A of the prime contract. Work not specifically included is expressly excluded.

Please contact me if you have any questions.

Sincerely,  
**Austin Commercial, LP**

Barry Staehs  
PreConstruction Manager

cc: Tom Hellwig, LAWA  
Sudhir Patel, LAWA  
Ishwar Gurung, LAWA  
Janet Maza, Austin Commercial, LP  
Jimmy Cole, Austin Commercial, LP  
Brian Weinbaum, Austin Commercial, LP  
John Pekarovic, Austin Commercial, LP  
Christine Naguib, Austin Commercial, LP

**Attachments:**

**Attachment # 1: ACLP Detailed Cost Summary worksheet – Design**

**Attachment # 2: AC Martin Design Proposal**



TERMINAL CORES AND APM INTERFACE  
CCR 0075 - TBIT NELA DAS DESIGN ONLY

ITEM	DESCRIPTION	Qty	U/m	ITEMIZED COSTS								TOTALS	
				LABOR		MATERIAL		EQUIPMENT		SUBCONTRACT			
				Unit	Extension	Unit	Extension	Unit	Extension	Unit	Extension		
1			LS		\$ -		\$ -		\$ -		\$ -		\$ -
2			LS		\$ -		\$ -		\$ -		\$ -		\$ -
3			LS		\$ -		\$ -		\$ -		\$ -		\$ -
4			LS		\$ -		\$ -		\$ -		\$ -		\$ -
5			LS		\$ -		\$ -		\$ -		\$ -		\$ -
6			EA		\$ -		\$ -		\$ -		\$ -		\$ -
7					\$ -		\$ -		\$ -		\$ -		\$ -
8					\$ -		\$ -		\$ -		\$ -		\$ -
9					\$ -		\$ -		\$ -		\$ -		\$ -
10					\$ -		\$ -		\$ -		\$ -		\$ -
11					\$ -		\$ -		\$ -		\$ -		\$ -
12					\$ -		\$ -		\$ -		\$ -		\$ -
13					\$ -		\$ -		\$ -		\$ -		\$ -
14					\$ -		\$ -		\$ -		\$ -		\$ -
15					\$ -		\$ -		\$ -		\$ -		\$ -
16					\$ -		\$ -		\$ -		\$ -		\$ -
17					\$ -		\$ -		\$ -		\$ -		\$ -
18					\$ -		\$ -		\$ -		\$ -		\$ -
19					\$ -		\$ -		\$ -		\$ -		\$ -
20					\$ -		\$ -		\$ -		\$ -		\$ -
	Insert above.				\$ -		\$ -		\$ -		\$ -		\$ -
	SURE/ Subguard/ Sub Default Program Cost (1.5% on COW)												\$ -
	Subtotal				\$ -		\$ -		\$ -		\$ -		\$ -
1	AC MARTIN - ASR 56 - TBIT NELA DAS DESIGN	1.00	LS		\$ -		\$ -		\$ -		\$ 21,514.47		\$ 21,514.47
2					\$ -		\$ -		\$ -		\$ -		\$ -
3					\$ -		\$ -		\$ -		\$ -		\$ -
4					\$ -		\$ -		\$ -		\$ -		\$ -
5					\$ -		\$ -		\$ -		\$ -		\$ -
6					\$ -		\$ -		\$ -		\$ -		\$ -
7					\$ -		\$ -		\$ -		\$ -		\$ -
8					\$ -		\$ -		\$ -		\$ -		\$ -
9					\$ -		\$ -		\$ -		\$ -		\$ -
10					\$ -		\$ -		\$ -		\$ -		\$ -
11					\$ -		\$ -		\$ -		\$ -		\$ -
12					\$ -		\$ -		\$ -		\$ -		\$ -
13					\$ -		\$ -		\$ -		\$ -		\$ -
14					\$ -		\$ -		\$ -		\$ -		\$ -
15					\$ -		\$ -		\$ -		\$ -		\$ -
16					\$ -		\$ -		\$ -		\$ -		\$ -
17					\$ -		\$ -		\$ -		\$ -		\$ -
18					\$ -		\$ -		\$ -		\$ -		\$ -
19					\$ -		\$ -		\$ -		\$ -		\$ -
20					\$ -		\$ -		\$ -		\$ -		\$ -
	Insert above.				\$ -		\$ -		\$ -		\$ -		\$ -
	Subtotal				\$ -		\$ -		\$ -		\$ 21,514.47		\$ 21,514.47
	Total Cost of Work (COW)				\$ -		\$ -		\$ -		\$ 21,514.47		\$ 21,514.47
	Consumables	0.00%	pct										\$ -
	Contingency	0.00%	pct										\$ -
	Design Bullder Fee, Self-Perform	0.00%	pct										\$ -
	Subtotal												\$ -
	Subtotal												\$ 21,514.47





TERMINAL CORES AND APM INTERFACE  
CCR 0075 - TBIT NELA DAS DESIGN ONLY

ITEM	DESCRIPTION	Qty	u/m	ITEMIZED COSTS								TOTALS		
				LABOR		MATERIAL		EQUIPMENT		SUBCONTRACT				
				Unit	Extension	Unit	Extension	Unit	Extension	Unit	Extension			
SECTION 4	COW (Includes SURE/ Subguard cost)											\$	21,514.47	
	TAX on COW @0.101%			0.101%	pcnt							\$	21.72	
	Fee, Bonds & Insurance on (COW+TAX on COW) @7.30%			7.300%	pcnt							\$	1,572.14	
	Tax on Fee on (COW+TAX on COW)@0.101%			0.101%	pcnt							\$	1.59	
	<b>TOTAL</b>												\$	<b>23,109.92</b>
	<b>TOTAL FEE</b>												\$	<b>1,572.14</b>
<b>TOTAL TAX</b>												\$	<b>23.31</b>	



INSERT PCO NUMBER & NAME

GMP Approved FEE & TAX CALCS

TBIT		T5.5		T7	
Cost-of-Work (Subcontractors in SURE)	\$ -	Cost-of-Work (Subcontractors in SURE)	\$ -	Cost-of-Work (Subcontractors in SURE)	\$ -
SURE (Subguard/Sub Default Program Cost 1.5% on COW)	\$ -	SURE (Subguard/Sub Default Program Cost 1.5% on COW)	\$ -	SURE (Subguard/Sub Default Program Cost 1.5% on COW)	\$ -
Cost-of-Work (Subcontractors not in SURE)	\$ 21,514.47	Cost-of-Work (Subcontractors not in SURE)	\$ -	Cost-of-Work (Subcontractors not in SURE)	\$ -
<b>SUBTOTAL COW</b>	<b>\$ 21,514.47</b>	<b>SUBTOTAL COW</b>	<b>\$ -</b>	<b>SUBTOTAL COW</b>	<b>\$ -</b>
Consumables	\$ -	Consumables	\$ -	Consumables	\$ -
Contingency 0.000	\$ -	Contingency 0.000	\$ -	Contingency 0.000	\$ -
Design Builder Fee, Self-Perform	\$ -	Design Builder Fee, Self-Perform	\$ -	Design Builder Fee, Self-Perform	\$ -
<b>SUBTOTAL COW + OTHERS</b>	<b>\$ 21,514.47</b>	<b>SUBTOTAL COW + OTHERS</b>	<b>\$ -</b>	<b>SUBTOTAL COW + OTHERS</b>	<b>\$ -</b>
Tax on COW @0.101%	\$ 21.72	Tax on COW @0.101%	\$ -	Tax on COW @0.101%	\$ -
Fee, Bonds & Ex. Liab Ins. on (COW+TAX on COW) @7.30%	\$ 1,572.14	Fee, Bonds & Ex. Liab Ins. on (COW+TAX on COW) @7.30%	\$ -	Fee, Bonds & Ex. Liab Ins. on (COW+TAX on COW) @7.30%	\$ -
Tax on Fee, Bonds & Ex. Liab Ins. on (COW+TAX on COW)@0.101%	\$ 1.59	Tax on Fee, Bonds & Ex. Liab Ins. on (COW+TAX on COW)@0.101%	\$ -	Tax on Fee, Bonds & Ex. Liab Ins. on (COW+TAX on COW)@0.101%	\$ -
<b>TOTAL</b>	<b>\$ 23,109.92</b>	<b>TOTAL</b>	<b>\$ -</b>	<b>TOTAL</b>	<b>\$ -</b>
TAX	\$ 23.31	TAX	\$ -	TAX	\$ -

Breakout of 7.30% Mark-ups (Fee, Bonds & Insurances)

Contract Fee @4.95%	\$ 1,066.04	Contract Fee @4.95%	\$ -	Contract Fee @4.95%	\$ -
ACL P&P Bond Cost @1%	\$ 215.36	ACL P&P Bond Cost @1%	\$ -	ACL P&P Bond Cost @1%	\$ -
ACL Ex. Liab Ins & Builders Risk Cost @1.35%	\$ 290.74	ACL Ex. Liab Ins & Builders Risk Cost @1.35%	\$ -	ACL Ex. Liab Ins & Builders Risk Cost @1.35%	\$ -
<b>Total Fee Check</b>	<b>\$ 1,572.14</b>	<b>Total Fee Check</b>	<b>\$ -</b>	<b>Total Fee Check</b>	<b>\$ -</b>

TBIT Breakout	
Cost of Work	\$ 21,514.47
SURE	\$ -
Others	\$ -
Fee	\$ 1,066.04
Bond	\$ 215.36
Insurance	\$ 290.74
Tax	\$ 23.31
<b>Total</b>	<b>\$ 23,109.92</b>

T5.5 Breakout	
Cost of Work	\$ -
SURE	\$ -
Others	\$ -
Fee	\$ -
Bond	\$ -
Insurance	\$ -
Tax	\$ -
<b>Total</b>	<b>\$ -</b>

T7 Breakout	
Cost of Work	\$ -
SURE	\$ -
Others	\$ -
Fee	\$ -
Bond	\$ -
Insurance	\$ -
Tax	\$ -
<b>Total</b>	<b>\$ -</b>

TOTAL	
Cost of Work	\$ 21,514.47
SURE	\$ -
Others	\$ -
Fee	\$ 1,066.04
Bond	\$ 215.36
Insurance	\$ 290.74
Tax	\$ 23.31
<b>Total</b>	<b>\$ 23,109.92</b>

# ACMARTIN

March 18, 2021

Ms. Janet Maza  
Austin Commercial, LP  
LAX Terminal Cores & APM Interface (DA-5262) – 1801  
6101 W. Imperial Highway  
Los Angeles, CA 90045

**Re: LAX – Additional Service Request #57  
TBIT NELA DAS  
LAWA Change Directive No. 0013 R-01  
ACM Project No. 2017105**

Dear Janet:

AC Martin is pleased to provide this additional services proposal for TBIT NELA DAS (Distributed antenna system) as requested by LAWA Change Directive No. 0013 R-01 dated 1/26/21.

## **ARCHITECTURAL SCOPE DESCRIPTION**

### **Drawing and Model Revisions**

- **Level 5 (2 locations) IT room Revisions** - Update plans, schedules and cloud all revisions. Coordinate 3' shift of rated wall and lid. Update Life Safety and Structural consultant backgrounds.
- **Level 1 (2 locations) DMRUs** - Add ceiling access point callout on RCP. ACM to indicate break line and note removable metal panel ceiling. ACLP will contract directly with PCI to design the appropriate ceiling support structure to accommodate the required opening. ACM to create a BIM model DMRU equipment mass (no fly zone volume) for clash detection and coordination against MEPF systems: FP Sprinkler, ELT lights, Fire Alarm devices.
- **L3 and L8 RCPS** - Coordinate, callout and cloud Antenna locations TBD upon RF design requirements. ACM to create a BIM Model antenna mass (no fly zone volume) for coordination with finishes and overhead MEPF trade systems to validate speaker location fits and no other overhead systems clash.
- Respond to and incorporate LAWA Comments.
- Provide BIM Model support

# ACMARTIN

## **Coordination Meetings**

- ACM has attended 5 meetings to date.
  - Design and BIM Coordination meetings with ACLP, Trades, LAWA (+ NELA Team)
  - Meetings with ACLP, LAWA (+ NELA team) and PCI to identify an appropriate ceiling access point at the N&S Ramp ceilings.
  - Meetings with PCI to discuss coordination between Design and Construction BIM Models.

## **Document Control and Permitting**

- DCN packaging
- Permit DCN including meetings with LADBS.

## **CA support**

- Respond to RFIs and field issues.
- Review Submittals: MTL Panel Ceilings and flange, Antenna products/finishes
- Field Reports and observation

## **Exclusions**

- Final antennas devices will be modeled by REI and referenced/ called out in architectural RCP.
- Coordination of the conduit risers by REI.
- No structural scope to be provided by JAMA.
- ACLP will contract directly with PCI to design the appropriate ceiling support structure to accommodate the required opening.
- ACLP will provide ACM the typical access panel details per the product PCI is supplying.
- No specifications to be provided by ACM.
- No waterproofing consulting to be provided by LZI.

## **PROFESSIONAL FEES**

The ACM Team is proposing to perform the work on a lump sum basis for a fee of **\$21,514.47**. In accordance with the job classifications on the attached fee matrix, multiplied by the hourly rates of each individual on the team.

---

# AC MARTIN

## LIMITATION AND PROVISION FOR EXTENDED SERVICES

These services are solely for the use of ACLP/LAWA and no other person or entity. This Agreement is a full, complete and integrated expression of the understandings concerning the services for the proposed project. AC Martin shall not be obligated to provide services and ACLP shall not be obligated to pay for services beyond those described herein. Services may be extended in writing to include a revision in scope, timeframe and/or fee as mutually agreed upon by ACLP and AC Martin.

Sincerely,  
AC MARTIN PARTNERS, INC.



---

Susan O'Connell, AIA, DBIA, LEED AP BD+C  
Managing Principal

---

Millard Lee, AIA, DBIA  
Principal

## AUTHORIZATION TO PROCEED

The undersigned provides AC Martin Partners, Inc., authorization to provide the limited services as generally described herein.

---

Name/Title

---

Date:

enclosures: Fee Matrix  
Exhibit A  
LAWA Change Directive No. 0013 R-01 dated 1/26/21





APM TERMINAL CORES  
ASR #56\_TBIT NELA DAS (LAWA Change Directive No. 0013 R-01)  
Design Fees

\$ 21,514.47

Item (Sequence Number)	Task	Category	Description	Staff Name	Company	Qty	Unit	Unit Cost	Raw Salary	Equivalent # Months	Annual Equivalent	Multiplier (1.00 for Materials/ equipment)	Burdened Salary	Car per Month (End vehicle, insurance, gas)	Car	Mobile Phone per Month	Mobile Phone	Computer per Month	Computer	Total Cost	SBE? (Yes or No)	LSBE? (Yes or No)	DSBE? (Yes or No)	SBE Cost	LSBE Cost	DSBE Cost	DVBE Cost
TBIT NELA DAS		Staff	Principal In Charge	Susan O'Connell	AC Martin	13	Hour	\$ 96.15	\$ 1,249.95	0.1	\$ 177,885.30	1.10	\$ 3,318.81	In multiplier	\$ -	In multiplier	\$ -	In multiplier	\$ -	\$ 3,318.81	Yes			\$ -	\$ 3,318.81	\$ -	\$ -
TBIT NELA DAS		Staff	Design Manager	George Malvarinos	AC Martin	10	Hour	\$ 72.12	\$ 721.20	0.1	\$ 133,277.76	1.10	\$ 2,235.72	In multiplier	\$ -	In multiplier	\$ -	In multiplier	\$ -	\$ 2,235.72	Yes			\$ -	\$ 2,235.72	\$ -	\$ -
TBIT NELA DAS		Staff	CA Manager	Graig Mathaway	AC Martin	10	Hour	\$ 81.60	\$ 816.00	0.1	\$ 153,636.80	1.10	\$ 1,909.60	In multiplier	\$ -	In multiplier	\$ -	In multiplier	\$ -	\$ 1,909.60	Yes			\$ -	\$ 1,909.60	\$ -	\$ -
TBIT NELA DAS		Staff	TBIT Project Architect	Peter Elm	AC Martin	82	Hour	\$ 50.96	\$ 4,178.72	0.5	\$ 84,174.08	1.10	\$ 17,954.03	In multiplier	\$ -	In multiplier	\$ -	In multiplier	\$ -	\$ 17,954.03	Yes			\$ -	\$ 17,954.03	\$ -	\$ -
TBIT NELA DAS		Staff	BM Manager	Henry Diaz	AC Martin	4	Hour	\$ 43.51	\$ 174.04	0.0	\$ 89,117.36	1.10	\$ 980.77	In multiplier	\$ -	In multiplier	\$ -	In multiplier	\$ -	\$ 980.77	Yes			\$ -	\$ 980.77	\$ -	\$ -
AC Martin totals:									\$ 6,940		\$ 21,514.47		\$ 21,514.47							\$ 21,514				\$ 21,514		\$ -	\$ -

\*Gray cells contain formulas. Enter information in white cells only.

Participation Percentage: 0% 100% 0% 0%



# Austin Commercial, LP

100% Employee Owned

## TRANSMITTAL

No. 8034

**PROJECT:** LAX TERMINAL CORES & APM INTERFACE (DA-5262)

**DATE:** 04/21/2021

**OWNER PROJ #:** DA-5262

**DUE DATE:**

**JOB:** 1801

**TO:** LOS ANGELES WORLD AIRPORTS  
7301 WORLD WAY WEST  
LOS ANGELES CA 90045

**FROM:** Austin Commercial, LP  
6101 WEST IMPERIAL HIGHWAY SUITE  
200  
LOS ANGELES CA 90045

**RE:** CCR 0117R1 - CD 0013R2 - TBIT NELA DAS Proposal

**ATTN:** Chuck Henning

WE ARE SENDING:	SUBMITTED FOR:	ACTION TAKEN:
<input type="checkbox"/> Submittal	<input checked="" type="checkbox"/> Approval	<input type="checkbox"/> Approved as Submitted
<input type="checkbox"/> Shop Drawings	<input type="checkbox"/> Your Use	<input type="checkbox"/> Approved as Noted
<input type="checkbox"/> Letter	<input type="checkbox"/> As Requested	<input type="checkbox"/> Returned After Loan
<input type="checkbox"/> Prints	<input type="checkbox"/> Review and Comment	<input type="checkbox"/> Resubmit
<input type="checkbox"/> Change Order		<input type="checkbox"/> Submit
<input type="checkbox"/> Plans	<b>SENT VIA:</b>	<input type="checkbox"/> Returned
<input type="checkbox"/> Samples	<input checked="" type="checkbox"/> Attached	<input type="checkbox"/> Returned for Corrections
<input type="checkbox"/> Specifications	<input type="checkbox"/> Separate Cover Via:	<input type="checkbox"/> Other:
<input checked="" type="checkbox"/> Other: CCR Proposal		

Item	Qty	Date	Reference	Rev.	Description	Comments	Status
CCR Proposal	1	04/21/2021			CCR 0117R1 - CD 0013R2 - TBIT NELA DAS Proposal		In Review

**NOTES:** Please see attached CCR 0117R1 - CD 0013R2 - TBIT NELA DAS Proposal for your review . 107 pages including transmittal.

Signed: Esmeralda Arciga Date: 04/21/2021  
Esmeralda Arciga 5:55:35 PM

Received By: \_\_\_\_\_ Date: \_\_\_\_\_

**CC:** Brian Weinbaum  
JAMES COLE  
Janet Maza  
John Pekarovic  
Ishwar Gurung  
Sudhir Patel

<b>DOC CONTROL</b>
<b>Apr 22, 2021</b>
<b>8:32 am</b>
<b>RECEIVED</b>



# Austin Commercial

An Austin Industries Company

April 21, 2021

Los Angeles World Airports  
6101 W. Imperial Hwy., Suite 200  
Los Angeles, CA 90045  
Via email: chenning@lawa.org

Austin Commercial, L.P.  
Construction Manager/General Contractor  
5901 W. Century Blvd, Suite 600  
Los Angeles CA 90045  
310.421.0269 Office  
310.421.0260 Fax  
www.austincommercial.com  
CA Lic. #806038

Attn: Mr. Charles Henning

**RE: Terminal Cores and APM Interface DA-5262  
CD-0013R2 TBIT Core – NELA DAS  
CCR 117R1**

Dear Charles:

ACL P is pleased to present our pricing proposal for CCR 117R1 – CD-0013R2 TBIT Core NELA DAS. As requested in CD-0013R2, this Contractor Change Request (CCR) includes pricing for the Construction portion of the work. Please refer to Attachments which summarizes the scope and fees for ACL P and its Trade Partners to execute the Construction as outlined in CCR 117R1.

The CCR cost is as follows:

**Construction Total \$566,276.80**

This is a Lump Sum proposal per GC-61 sub part A of the prime contract. Work not specifically included is expressly excluded.

Please contact me if you have any questions.

Sincerely,  
**Austin Commercial, LP**

*Barry Staehs*

Barry Staehs  
PreConstruction Manager

cc: Tom Hellwig, LAWA  
Sudhir Patel, LAWA  
Ishwar Gurung, LAWA  
Janet Maza, Austin Commercial, LP  
Jimmy Cole, Austin Commercial, LP  
Brian Weinbaum, Austin Commercial, LP  
John Pekarovic, Austin Commercial, LP  
Christine Naguib, Austin Commercial, LP

Attachments:



- Attachment #1: CD013R2
- Attachment #2: ACLP Detailed Cost Summary worksheet
- Attachment #3: Rosendin Proposal Construction
- Attachment #4: Rosendin Design PCO 0034
- Attachment #5: PCI Proposal
- Attachment #6: ISEC Proposal
- Attachment #7: XCEL Proposal



Terminal Cores and APM Interface (DA-5262)

Project # DA-5262

Los Angeles World Airports

Date: 2/18/2021 Document Control Number: 3306

Transmitted To	Transmitted By
Maza, Janet Austin Commercial LP 6101 W. Imperial Highway Suite 200 Los Angeles, CA 90045 Tel: Fax:	Henning, Charles Planning & Development Group 6101 W. Imperial Highway Suite 200 Los Angeles, CA 90045 Tel: Fax:

Package Transmitted For	Delivered Via	Tracking Number
CD-0013R2-PDG - TBIT Core - NELA-DAS - 2021-02-18	Email	CD-0013R2-PDG

Item #	Qty	Item	Reference	Description	Notes	Status
0001	1.00		3306	CD-0013R2-PDG - TBIT Core - NELA-DAS - 2021-02-18		

Cc:	Name	Company	Phone	Email	Copies
	Alcantara, Martha	PDG	424-646-7266	malcantara@lawa.org	1
	Arciga, Esmeralda	AUSCOM	213-434-7176	earciga@austin-ind.com	1
	Arrieta, Alfredo	PDG	424-646-7434	aarrieta@lawa.org	1
	Bargsten, Richard	LAWA	213-305-9214	rbargsten@lawa.org	1
	Bentley, Steven	LAWA	424-646-7513	sbentley2@lawa.org	1
	Berny, Marouane	PDG	424-646-7126	mberny@lawa.org	1
	Billesbach, Richard	LAWA	310-877-0815	rbillesbach@lawa.org	1
	Cao, Thomas	PDG	310-729-3509	tcao@lawa.org	1
	Cawyer, Rebecca	LAWA	424-646-5857	rcawyer@lawa.org	1
	Cole, Jimmy	AUSCOM	424-646-9161	jicole@austin-ind.com	1
	Davis, Stephanie	PDG	424-646-7187	sdavis2@lawa.org	1
	Doc Controls, PDG	PDG	424-646-7534	LAWA-CIP-DOCS@lawa.org	1
	Figueroa, Regielito	LAWA	424-646-7636	rfigueroa@lawa.org	1
	Goshtasbi, Fred	LAWA	424-646-7571	fgoshtasbi@lawa.org	1
	Gurung, Ishwar	PDG	424-646-7528	igurung@lawa.org	1
	Hebert, Robert	LAWA	424-646-5810	rhebert@lawa.org	1
	Hellwig, Thomas	PDG	424-646-7576	thellwig@lawa.org	1
	Hendriksen, Angela	AUSCOM	424-646-9178	ahendriksen@austin-ind.com	1
	Henning, Charles	PDG	424-646-7024	chenning@lawa.org	1
	Hentschel, Rick	PDG	424-646-7538	rhentschel@lawa.org	1
	Hirsch, Paul	PDG	424-646-6993	phirsch@lawa.org	1
	Kanda, Surinder	PDG	424-646-7352	skanda@lawa.org	1
	Kolk, Brandon	PDG	310-846-3096	bkolk@lawa.org	1
	Kourkos, Samuel	LAWA	424-646-6789	skourkos@lawa.org	1
	Li, Stacey	AUSCOM	424-646-9160	sli@austin-ind.com	1

				<b>Transmittal</b>	
				Standard LAWA Transmittal V3 - Main	
Lopez, Gerardo	LAWA	424-646-5786	glopez@lawa.org		1
Lopez, Patricia	PDG	310-846-3096	plopez@lawa.org		1
Martikian, Mary	AUSCOM	424-646-9166	mmartikian@austin-ind.com		1
Maza, Alfonso	AUSCOM	310-343-1378	amaza@austin-ind.com		1
Maza, Janet	AUSCOM	602-421-8471	jmaza@austin-ind.com		1
Melton, Ron	PDG	310-908-2258	rmelton@lawa.org		1
Morales, Cecilia	PDG	424-646-6791	cmorales@lawa.org		1
Morgan, Jeff	LAWA	626-622-8302	jmorgan@lawa.org		1
Ohanian, Sepou	LAWA	310-877-0247	sohanian@lawa.org		1
O'Neill, Sean	LAWA		SONEILL@lawa.org		1
Patel, Deepak	PDG	310-678-3743	dpatel2@lawa.org		1
Patel, Raja	PDG	310-628-6468	rpatel@lawa.org		1
Patel, Sudhir	PDG	424-646-7153	spatel@lawa.org		1
Paulis, Pohl	PDG	949-295-1566	ppaulis@lawa.org		1
Plagar, Mayra	AUSCOM	424-646-6588	mplagar@austin-ind.com		1
Powers, Crystal	PDG	424-646-7534	cpowers@lawa.org		1
Rastegar, AJ	PDG	424-646-7089	arastegar@lawa.org		1
Rios, Antonio	LAWA	213-598-7306	arios@lawa.org		1
Roa, Ed	PDG	310-846-3096	eroa@lawa.org		1
Solis, Adriana	PDG	424-646-7041	ASOLIS2@lawa.org		1
White, Deneen	PDG	760-444-5536	DWHITE2@lawa.org		1
Wilson, Lenny	PDG	424-646-7355	lwilson@lawa.org		1

**File Code / Remarks:**

DA-5262 Terminal Cores and APM Interface  
5.4

Received by: (Print name and sign)

Signed Date

Transmitted by Henning, Charles

Signed Date



# Change Directive

LAWA Contract No: DA-5262

Contract Title: Terminal Cores and APM Interface (DA-5262)

Contractor Address:

3535 Travis Street

Suite 300

Dallas, TX 75204-1466

Contractor: Brian Weinbaum

Austin Commercial LP

**Change Directive Number: 0013**

**R-02**

Rev Date: 2/17/2021

Date: 6/12/2020

**Change Directive Title: TBIT Core - NELA DAS**

Contact: AJ Rastegar

Contact No: 424-646-5857

CGMP No:	Sub Project: TBIT	Terminal:
----------	-------------------	-----------

Reference Document:

RFI No: N/A

CPCN No: N/A

Bulletin No: N/A

Field Directive No: N/A

Other Reference: N/A

1.  Contractor is directed to provide a Contractor Change Request(CCR) within 21 days for the
  - Extra Work defined herein.
  - Changed Work defined herein.
  
2.  CPCN No(s) is determined to have merit.
  
3.  Proceed with the work described herein for an amount Not to Exceed \$0.00 until such time as work is completed or a mutually agreed price can be negotiated. Time and Material (T&M) records are to be maintained and submitted for all of this work performed prior to completion of the negotiations or up to the Not-To-Exceed amount, whichever comes first. Contractor shall provide forty-eight(48) hour notice to LAWA Inspector before proceeding with the Work. Costs associated with the T&M authorization shall fully comply with General Conditions - ( Pricing - Time and Materials). Contractor shall submit to the LAWA Inspector for signature a daily itemization of all such costs in such form as LAWA requires. Contractor shall report when the T&M reaches 80% of the authorized amount under this Change Directive. T&M changes will be reimbursed based upon the cost reimbursable guidelines outlined in the pricing section of the Contract under General Conditions , Pricing.
  
4.  Proceed as described herein on an Agreed/Lump Sum Price Basis in the amount of \$0.00.
  
5.  Contractor is directed to Stop/Eliminate the work immediately and provide a credit Contractor Change Request(CCR) within 21 days for the applicable work eliminated herein.



# Change Directive

Change Directive Number: 0013 R-02  
 Change Directive Title: TBIT Core - NELA DAS

Austin Commercial LP  
 3535 Travis Street  
 Suite 300  
 Dallas, TX 75204-1466

## Direction:

This Revision to Change Directive 0013R2 is meant to clarify CD13R1. The original CD 13R1 was missing the scope summary table below, and included an incorrect file for TBIT Core - DAS Curbside Scope Overview\_12-22-20 (R2 - riser schematic slip sheet). Those items have been corrected in this CD 13R2.

LAWA is directing ACLP to provide updated pricing for the Design and Construction components for the NELA DAS Program, which will be negotiated and incorporated into the TBIT Core Project. ACLP is being directed to provide updated pricing based on the revised scope of work table below, as well as revisions to the Electrical scope of work per Rosendin's marked up exhibit "NELA TBIT Core DAS T-LAX-13174-2 Electrical 010721\_ENG\_COMMENTS", and revisions to the TBIT Curbside scope as outlined in Exhibit "TBIT Core - DAS Curbside Scope Overview\_12-22-20 (R2 - riser schematic slip sheet)" and "TBIT Core IDF package (100% Drawings) 1-12-21.pdf". See attached reference exhibits as well as scope descriptions below.

Task	Scope Detail/Notes
<b>IDFs</b>	
Level 5 IDF Rooms (Layout and Mechanical)	Expansion of the 5th floor IT rooms (TBIT-05-C14-110 & TBIT-05-C15-050) by 3' in order to obtain clearance behind the cabinets. 3rd floor rooms and O-DAS room layouts are accepted at this point. Accommodate for (4) MCR Cabinets in each room for exhaust requirements.
Departures Level - Room TBIT-03-C16-010 Electrical - LAWA	Fully Rated 100A panel and meter with upstream conductor/gear upsize as needed (see DAS electrical 1-line)
Departures Level - Room TBIT-03-C13-040 Electrical - LAWA	Fully Rated 100A panel and meter with upstream conductor/gear upsize as needed (see DAS electrical 1-line)
Upper Mezzanine Level - Room TBIT-05-C14-110 Electrical - LAWA	Fully Rated 100A panel and meter with upstream conductor/gear upsize as needed (see DAS electrical 1-line) AND Provide Alternate pricing to use existing power from Northside as per REI markups
Upper Mezzanine Level - Room TBIT-05-C15-050 Electrical - LAWA	Fully Rated 100A panel and meter with upstream conductor/gear upsize as needed (see DAS electrical 1-line) AND Provide Alternate pricing to use existing power from Northside as per REI markups
CTA DMRU North - LAWA	No Scope by Program: DMRU locations proposed by program accepted by DAS team - ONLY Scope of work for ACLP is to include DMRU locations in BIM model.
CTA DMRU South - LAWA	No Scope by Program: DMRU locations proposed by program accepted by DAS team - ONLY Scope of work for ACLP is to include DMRU locations in BIM model.
Departures Level - Room TBIT-03-C16-010 HVAC	LAWA HVAC to be sized to accommodate additional 15,000 BTU DAS loads.
Departures Level - Room TBIT-03-C13-040 HVAC	LAWA HVAC to be sized to accommodate additional 15,000 BTU DAS loads.
Upper Mezzanine Level - Room TBIT-05-C14-110 3' room expansion	3' Room expansion to accommodate additional rear cabinet clearance if required by LAWA
Upper Mezzanine Level - Room TBIT-05-C15-050 3' room expansion	3' Room expansion to accommodate additional rear cabinet clearance if required by LAWA
Departures Level Custom Canopy Panels	(4) panels per detail
<b>Riser and Sleeves</b>	
Riser Conduit (R-1)	(5) 4" Risers/Sleeves to 4th floor Ceiling (vicinity of IDF 05-C15-050)
Riser Conduit (R-2)	(5) 4" Risers/Sleeves to 4th floor Ceiling (vicinity of IDF 05-C14-110)
Riser Conduit (R-3)	(5) 4" Risers from L5 Ceiling to L6 Ceiling (vicinity of IDF 05-C15-050)
Riser Conduit (R-4)	(5) 4" Risers from L5 Ceiling to L6 Ceiling (vicinity of IDF 05-C14-110)



Change Directive Number:  
Change Directive Title:

0013 R-02  
TBIT Core - NELA DAS

## Change Directive

Austin Commercial LP  
3535 Travis Street  
Suite 300  
Dallas, TX 75204-1466

Riser Conduit (R-5)	(5) 4" Risers from L1 Ceiling to L3 Ceiling (vicinity of IDF 03-C13-040)
Riser Conduit (R-6)	(5) 4" Risers from L1 Ceiling to L3 Ceiling (vicinity of IDF 03-C16-010)
Riser Conduit (R-7)	(1) 4" Riser from L1 Ceiling to L3 Ceiling (@ north arrivals walkway DMRU)
Riser Conduit (R-8)	(1) 4" Riser from L1 Ceiling to L3 Ceiling (@ south arrivals walkway DMRU)
Riser Conduit (R-9)	(1) 4" Risers from L4 Ceiling to L3 Ceiling (@ R-7)
Exterior Core/Sleeve (S-A)	(1) 4" sleeve @ (R-7) to exterior
Exterior Core/Sleeve (S-B)	(1) 4" sleeve @ (R-8) to exterior
Exterior Core/Sleeve (S-C)	(1) 4" sleeve @ (R-7) to exterior
Exterior Core/Sleeve (S-D)	(1) 4" sleeve @ (R-8) to exterior
<b>Support Documents</b>	
LAX TBIT CORE cables sleeves and riser schematic 12-22-20.pptx	riser and sleeve schematic
TBIT Core IDF package (100% Drawings) 1-12-21.pdf	riser and sleeve schematic
TBIT Core - DAS Curbside Scope Overview_12-22-20 (R2 - riser schematic slip sheet)	riser and sleeve schematic
NELA TBIT Core DAS T-LAX-13174-2 Electrical 010721_ENG_COMMENTS	

### Authorization

By: Ishwar Gurung Feb 18, 2021  
Controls Manager

By: AR Charles Henning Feb 18, 2021  
Project/Construction Manager

By: Hans Thilenius Feb 18, 2021  
Hans Thilenius  
TDIP Deputy Executive Director

**Note:** Standard Board authorized amount is up to \$150,000

## Contract Amendment Number 2

## Exhibit B

The amendment total amount includes \$60,613.28 as the NELA DAS Carrier Allowance and will be managed per PR-05 of the contract documents. Refer to Allowance items V titled "NELA DAS Carrier Allowance" in the table below:

<b>Item</b>	<b>Allowance Type</b>	<b>Budget</b>
<b>A</b>	Permits/Fees not covered by LAWA IDOs	\$200,000
<b>B</b>	Additional Unforeseen Conditions	\$3,000,000
<b>C</b>	Hazardous Material Mitigation	\$750,000
<b>D</b>	Additional Traffic Control	\$430,300
<b>E</b>	Partnering	\$1,420,000
<b>F</b>	Additional Security Service and Fire watch	\$490,000
<b>G</b>	Project Management Office Construction and Associated Lease	\$4,143,636
<b>H</b>	Additional 3rd Party Testing & Inspection	\$200,000
<b>I</b>	Additional Existing Condition Investigations	\$465,268
<b>J</b>	Early Use Maintenance Cost	\$2,100,000
<b>K</b>	LAWA Design and Construction Allowance	\$4,829,692
<b>L</b>	Schedule Allowance	\$1,200,000
<b>M</b>	Additional Relocation of Functional Operations	\$525,000
<b>N</b>	Additional Temporary Building Services due to Phasing	\$500,000
<b>O</b>	CDG Related Improvements or Services	\$100,000
<b>P</b>	Third Party Services	\$175,000
<b>Q</b>	Laydown Area Lease	\$1,628,096
<b>R</b>	Field Services	\$100,000
<b>S</b>	Terrazzo Installation Allowance	\$375,000
<b>T</b>	IT Systems and Equipment Allowance	\$800,000
<b>U</b>	Design & Construction of Recycled Water System	\$1,300,000
<b>V</b>	NELA DAS Carrier Allowance	\$60,613.28
	<b>Total</b>	<b>\$24,792,605</b>